

# Product Catalogue 2020

– Nilfisk grey line









# Nilfisk – with you all the way

Every day, throughout the world, people need clean workplaces, institutions, factories, hospitals, schools, airports and homes. And as global populations grow bigger, and living standards improve, the demand for cleaning increases.

Since Nilfisk was founded, we have been determined to meet these demands with products and services of the highest quality worldwide. As a result businesses, public institutions and private households all over the world continue to rely on Nilfisk to keep their facilities safe, their office environments productive and their homes clean. In short, we are committed to clearing the way for a safer, cleaner and more productive every day.

## Sustainable cleaning

At Nilfisk we believe, that one of the key drivers for sustainable cleaning is achieving more with less. Less energy, less water and less detergent. This will reduce costs for you as our customer whilst simultaneously improving our environmental footprint.

Because working responsibly is a key priority for Nilfisk. We have signed the United National Global Compact and Carbon Disclosure Project. As a consequence, we work actively on lowering our carbon footprint and monitor our resource consumption closely.

All of our production facilities are certified under ISO 9001 and ISO 14001 ensuring a standardized approach to production and the necessary environmental management system.

## Making your business smarter

Today, new technologies are radically changing industries. And how we clean in the years to come will be different from how, we clean today. Data will enable us predict the need for cleaning; autonomous solutions will provide more precise outcomes and connected products will enable our more than 700 trained service technicians to deliver even better maintenance.

At Nilfisk we strive to be at the forefront of this technological development for the benefit of your business. We have dedicated engineers and product developers all over the world, who are working around the clock on creating innovative cleaning technologies and solutions. Ensuring that we meet your cleaning needs and provide the best possible quality of clean – both today and tomorrow. That is why, we have made it our vision to lead intelligent cleaning to make your business smarter.

Nilfisk Liberty SC50

# FREEDOM TO DO BETTER

With a century's knowledge behind its development, and today's most advanced robotics technology powering its capabilities, the autonomous Nilfisk Liberty SC50 represents our commitment to delivering the world's most intelligent cleaning solutions.



Contact your local  
representative for more information



# Index

## Scrubber dryers

SC100	7
SC250	8
SC351	9
SC401	10
SC430	11
SC450	12
SC500	13
SC530	14
BA/CA 551/611	15
BA651/751/851	16
SC800	17
SC1500	18
SC2000	19
BR652/752/752C	20
BR755/755C/855	21
BR850S	22
SC3500	23
SC6000	24
SC6500	25
SC8000	26
CS7010	28
CR1500	29
Overview of accessories	30

## Sweepers

SW200 / SW250	33
SW750	34
SW900	35
SR1000S	36
SR1101	37
SW4000	38
SW5500	39
SR1601	40
SW8000	41
Overview of accessories	42

## Single-discs

FM400 L	45
FM400 H	46
FM400 D	47
BU500	48
BU800	49
Overview of accessories	50

## Carpet extractors

ES300	52
Overview of accessories	53

## Commercial vacuum cleaners

VP100	55
VP300 series	56
GD 930 / VP930	57
VP600	58
VP600 BATTERY	59
GD5/10 BACK	60
GD 5 Battery	61
VU500	62
GU700A	63
VL200	64
VL100	65
VL500-35	66
VL500-55	67
VL500-75	68
Overview of accessories	69

## Industrial vacuum cleaners

118	71
VHS120	71
VHS120 All-In-One	72
VHO200 All-In-One	72
S2B-S3B	73
S2-S3	73
VHS110 ATEX	74
T30S	75
CTS 22-CTS40-CTT40	75
T22-T40-T40W-T75	76
TPLUS series	76
3707-3907 series	77
3997-3997W-3997WC	77
VHC200	78
VHO200	79
ECO OIL 13 & 22	79
Additive Manufacturing	80
IVT1000	81
VHS110 CR	81
VHW200/201/210/211	82
VHW310/311	82
VHW320/321	83
VHW420/421	83
VHW440	84
R series	85
Pneumatic conveyors	86
Centralized vacuum systems	87
GM 80P	88
VHS 40	89
VHS 42 M-H	90
IVB 961-OL	91
IVB 965 SD XC	92
IVB 7X – ATEX TYPE 22	93
IVB 995 ATEX TYPE 22	94
Overview of accessories	95

Professional service	96
----------------------	----







## Upright scrubber dryer is the master of small space cleaning

- Scrub and dry in one single pass giving fast access to the cleaned area
- Two solution flow settings for efficient cleaning and red LED light indicator alarms when out of solution
- Ergonomic handle for comfortable one or two handed operation
- Easy to carry and to transport from one place to another – only 12 kg weight
- Only use clean solution: no dirt and bacteria spread everywhere on the floor
- Flat recovery tank design and full access makes it fast and easy to clean 100% of the recovery tank from any dirt
- Can do what others cannot: Low deck profile and offset allow to clean difficult to reach areas for real floor cleaning
- Easy and quick maintenance operations help the operator to always have a clean and functional machine
- Flexible cleaning: Eco flow for light cleaning and double flow for spot or hard cleaning
- All machine functions stop in upright position: No brush or squeegee on the floor and no solution spill when the machine is not in use
- Robust aluminum frame design guarantee high reliability and long life time
- Detergent dosing cap on solution tank to always have the right percentage of detergent

The Nilfisk SC100 is a small scrubber dryer for in-depth cleaning of narrow areas. Compared to the manual solution of mop and bucket, this compact upright machine will get the job done much faster offering a superior cleaning performance.



TECHNICAL DATA	SC100 E	SC100 E FULL PACKAGE
Rated power (W)	800	800
Sound pressure level at 1.5 m (dB(A) ISO 3744)	72 ± 2	72 ± 2
Productivity theoretical/actual (m²/h)	620/310	620/310
Scrubbing width (mm)	310	310
Solution/recovery tank (l)	3/4	3/4
Brush quantity and type	1 Cylindrical	1 Cylindrical
Brush speed (RPM)	2100	2100
Length x width x height (mm)	400x360x1150	400x360x1150
Gross weight (gvw) (kg)	15	15
<b>FEATURES</b>		
Detachable cord	•	•
Automatic solution shut off	•	•
Solution level indicator	•	•
Delivered ready to use (full package)	•	•
Tank in tank solution	•	•
Two hands working handle	•	•
<b>STANDARD EQUIPMENT</b>		
BRUSH CYL 310MM MEDIUM WHITE	107411860	107411860
2-HAND HANDLE	107413470	107413470
CARPET COMPLETE KIT		107411865
DETACHABLE CORD 10M EU	107413490	107413490
MANUAL SUCTION HOSE KIT		107411864
SQUEEGEE 321MM 13 CARPET KIT		107411868
SQUEEGEE 321MM 13 KIT	107411867	107411867
<b>ITEM NO.</b>	<b>107408100</b>	<b>107408103</b>



## SC250 is scrubbing, sweeping and drying in every corner

- Easy handling: Tank-in-tank design for carrying in one hand provide an easy emptying and refilling
- Effective: Sweeping, scrubbing and drying at the same time.
- High cleaning performance: 34 cm cylindrical brush or microfiber roll
- Productive: The 6 liter solution and recovery tank gives up to 40 minutes of working time without refill
- Powerful: Nilfisk 36V Lithium battery technology
- Easy to use: The ergonomic handle can be adjusted into different positions, used free floating or folded for storage
- Intuitive and self-explaining: Informative display on the handle.
- Full control: OneTouch™ button is activating all essential functions and touch sensors in the handle provide an easy operation
- Non-stop cleaning: The two water/solution settings can be changed on-the-fly
- Safe: Out of Water alarm protecting the machine
- Convenient: Easy to carry and move due to its compact design and low weight
- Low TCO: Long lifetime with 'No tool' inspection, service and maintenance

The Nilfisk SC250 is a compact scrubber dryer for fast and effective cleaning of hard floors, which will take you into every corner and ensure efficient cleaning in both directions – also under furniture and shelves. You will get a light and productive machine with a low sound level suited for daytime cleaning as it is battery-driven. An attractive choice for shops, schools, restaurants, cafes, bakeries, fast food chains, hotels, cleaning companies, etc.



### TECHNICAL DATA

### SC250 34C B

Voltage (V)	36
Rated power (W)	300
Sound pressure level at 1.5 m (dB(A) ISO 3744)	66 ±3
Productivity theoretical/actual (m²/h)	1360/680
Solution/recovery tank (l)	6/6
Brush quantity and type	1 Cyl
Brush speed (RPM)	1000
Brush pressure (kg)	Max 12
Length x width x height (mm)	630x425x400
Squeegee width (mm)	340
Gross weight (gvw) (kg)	32

### FEATURES

Compact design	•
Lithium battery	•
Delivered ready to use (full package)	•
One-Touch™ Button	•
Tank in tank solution	•
Scrubbing and sweeping	•

### STANDARD EQUIPMENT

BRUSH CYL 340MM MEDIUM NYLON WHITE	9100002066
MINI CONTAINER PLAST. F DIRT SIP	9100001964
SQUEEGEE 360MM PU 2 PCS SET	9100002064
BATTERY LI KIT INCL CHARGER EU UK	9100002056
<b>ITEM NO.</b>	<b>9087380020</b>





## Next generation in daily small area scrubbing and drying

- Low noise level for daytime cleaning, even in noise-sensitive areas
- Easy adjustable deck for a perfect traction control
- Adjustable water flow
- Fast and simple maintenance
- Clear recovery lid for easy inspection and function control
- Ergonomic, adjustable and foldable handle for easy transport and storage
- Extremely compact
- Roller bumpers for near to wall cleaning
- Real two tank system
- Patent Elastic Strap System to easily install and remove squeegee blades
- Battery level indicator

SC351 is offering both forward and backward scrubbing and drying with an impressive brush pressure of 27 kg. Easy to see how useful this feature is for cleaning in crowded places, between and behind tables, shelves, furniture and in other less accessible areas.



### TECHNICAL DATA

### SC351 full package

Voltage (V)	12
Rated power (W)	450
Sound pressure level at 1.5 m (dB(A) ISO 3744)	64
Productivity theoretical/actual (m²/h)	1480/890
Scrubbing width (mm)	370
Solution/recovery tank (l)	11/11
Brush/pad diameter (mm)	370/355
Brush quantity and type	1 Disc
Brush speed (RPM)	140
Brush pressure (kg)	27
Length x width x height (mm)	730x475x450
Squeegee width (mm)	470
Gross weight (gvw) (kg)	73
<b>FEATURES</b>	
Built-in charger	•
Automatic brush shut off	•
Automatic solution shut off	•
Battery version	•
Roller bumpers on squeegee	•
Battery level indicator	•
Squeegee	•
<b>STANDARD EQUIPMENT</b>	
BRUSH DISC 370MM 14.5 PROLENE BLUE	9099999000
BLADES SQUEEGEE 370MM 14.5 PU KIT	9100000077
BATTERY 12V 55AH AGM SPIRACEL	9100001664
CHARGER BATT. O/B 12V 15A 230V EU KIT	9100000713
<b>ITEM NO.</b>	<b>9087341020</b>



## Speed up your floor cleaning – with a compact and productive scrubber dryer

- Compact design and easy to maneuver
- Productive and powerful vacuum motor ensures a perfect cleaning and drying result
- Brush click on/off, and light weight squeegee with no hose connection
- Patented elastic strap system makes squeegee maintenance easy and simple
- Detergent mixing system will prevent overdosing of chemicals – saving the environment and the total cost of cleaning
- Ergonomic handle with touchpoints, OneTouch™ button and instruction stickers makes the machine simple for the operator to get started
- The Nilfisk SilentTech™ technology reduces the sound level from 65dB(A) – and down to 60dB(A) in silent mode

The compact and highly maneuverable SC401 walk-behind scrubber dryer offers all the speed, accuracy and ease-of-use you need for better cleaning of floors. To make things complete this high-performance machine has an extremely low sound level to enable daytime cleaning – even in sound sensitive areas.



TECHNICAL DATA	SC401 43 B	SC401 43 BD	SC401 43 BD FULL PKG	SC401 43 B FULL PKG	SC401 43 E
Voltage (V)	24	24	24	24	230
Productivity theoretical/actual (m²/h)	1720/1032	2150/1290	2150/1290	1720/1032	1720/860
Solution/recovery tank (l)	30/30	30/30	30/30	30/30	30/30
Brush/pad diameter (mm)	430/430	430/430	430/430	430/430	430/430
Brush quantity and type	1 disc	1 disc	1 disc	1 disc	1 disc
Brush speed (RPM)	140	140	140	140	170
Brush pressure (kg)	24	24	24	24	30
Length x width x height (mm)	1180x458x1055	1180x458x1055	1180x458x1055	1180x458x1055	1180x458x1055
Squeegee width (mm)	720	720	720	720	720
Gross weight (gvw) (kg)	151	166	166	151	144
<b>FEATURES</b>					
Battery model	•	•	•	•	
Cable model					•
Drive version		•		•	
One-Touch Button	•	•	•	•	•
Brush click-on/off	•	•	•	•	
Nilfisk SilenTech™ and Silent Mode	•	•	•	•	
Squeezable drain hose with flow control	•	•	•	•	•
Debris tray	•	•	•	•	•
Filling hose	•	•	•	•	•
Detergent Mixing System			•	•	
<b>STANDARD EQUIPMENT</b>					
HOSE FILLING	9097290000	9097290000	9097290000	9097290000	9097290000
CABLE EXTENSION EU PLUG L.2000MM SIP			9100000787	9100000787	
DETERGENT SOLUTION SYSTEM KIT			9100002531	9100002531	
HOSE QUICK CONNECTION	9100002572	9100002572	9100002572	9100002572	9100002572
METER HOUR 24V KIT		9100002257	9100002257	9100002257	
PAD HOLDER FLAT 17 432MM			9100002050	9100002050	
BRUSH DISC 430MM 17 PROLENE BLUE			L08812891	L08812891	L08812891
BLADE SQUEEGEE 700MM 28 GUM KIT	9100002541	9100002541	9100002541	9100002541	9100002541
BATT. 12V-76AH GEL MONOBLOC			80564310	80564310	
CHARGER BATT O/B 24V 10A 100-240V EU KIT			9100002545	9100002545	
<b>ITEM NO.</b>	<b>9087391020</b>	<b>9087393020</b>	<b>9087398020</b>	<b>9087390020</b>	<b>9087392020</b>





## Simple and user friendly walk-behind scrubber dryer

- Easy to use with one touch button that activate all scrubbing functions
- Integrated solution tank and recovery tank for high capacity
- Compatible with all Nilfisk accessories
- Excellent water pick-up

The SC430 is the perfect choice for simple and reliable daily cleaning of indoor mid-sized areas. With a reduced pushing force and a user friendly design the SC430 is intuitive to use.



TECHNICAL DATA	SC430 53 B GO FULL PKG
Voltage (V)	24
Rated power (W)	900
Sound pressure level at 1.5 m (dB(A) ISO 3744)	70 ±3
Productivity theoretical/actual (m²/h)	2120/1272
Scrubbing width (mm)	530
Solution/recovery tank (l)	40/40
Brush/pad diameter (mm)	530/508
Brush speed (RPM)	150
Brush pressure (kg)	35
Max. speed (km/h)	4
Length x width x height (mm)	
Squeegee width (mm)	760
Gross weight (gvw) (kg)	175
<b>FEATURES</b>	
Blades can be used on 4 edges	•
Battery level indicator	•
Water level indicator	•
Ergonomic handle with two safety switches	•
Quick change system for squeegee blades	•
Squeezable drain hose with flow control	•
Delivered ready to use (full package)	•
<b>STANDARD EQUIPMENT</b>	
BRUSH DISC 530MM 21 PROLENE BLUE	L08837025
BLADES SQUEE. 740MM 29 GUM RUBBER KIT	9100000279
BATT.12V-87AH AGM MONOBLOC	1464853000
<b>ITEM NO.</b>	<b>50000334</b>



## Simple, basic scrubber dryer that makes your cleaning an easy operation

- The low noise level enables daytime cleaning for increased comfort and efficiency
- Polyethylene corrosion proof rotomolded tank ensures durability
- Automatic squeegee release when hitting obstacles provides reliable use and extended lifetime of equipment
- Large recovery tank and removable lid for easy cleaning
- Fast and hygienic
- Most electrical components are placed in dedicated waterproof box for reliability and safety

In line with the century old Nilfisk tradition, SC450 combines performance, reliability, productivity and ease of use in a well designed and cost efficient all round scrubber/dryer.



TECHNICAL DATA	SC450 B	SC450 E
Rated power (W)	810	1650
Sound pressure level at 1.5 m (dB(A) ISO 3744)	68	70
Productivity theoretical/actual (m²/h)	2120/1272	2120/1060
Scrubbing width (mm)	530	530
Solution/recovery tank (l)	40/45	40/45
Brush/pad diameter (mm)	530/508	530/508
Brush quantity and type	1 Disc	1 Disc
Brush speed (RPM)	154	150
Brush pressure (kg)	34	34
Length x width x height (mm)	1174x760x980	1174x760x980
Squeegee width (mm)	760	760
Gross weight (gvw) (kg)	190	135
<b>FEATURES</b>		
Cable version		•
Battery version	•	
Blades can be used on 4 edges	•	•
Battery level indicator	•	
Ergonomic handle with two safety switches	•	•
Squeezable drain hose	•	•
Squeegee	•	•
<b>STANDARD EQUIPMENT</b>		
BLADES SQUEE. 740MM 29 GUM RUBBER KIT	9100000279	9100000279
<b>ITEM NO.</b>	<b>9087370020</b>	<b>9087372020</b>





## Carefully designed to improve productivity and drive down your cleaning cost

- Ideal for daytime cleaning: Nilfisk SilenTech™ technology keeps extreme low sound level in all conditions
- SmartFlow™ : solution flow of detergent/water automatically controlled by speed to have consistent cleaning and reduced consumptions
- Ease-of-use: Ergonomic drive paddle and informative display with OneTouch™ button and easy click on/off for the brush/padholder.
- SmartKey™ system with Separate Supervisor and Operator keySettings effectively controlled
- Easy handling: Plastic light squeegee with patent elastic strap system
- Sustainable: Ecoflex™ system with flexible detergent setting and water-only cleaning
- Effective: 53cm scrubbing width and automatic brush speed control to save energy
- User friendly: Electric motor to lower/raise brush deck with OneTouch™ button
- Productive: 45/45 liter water tanks and up to 5 hours of running time in light applications
- SC500 REV™ version – orbital scrubbing technology quickly and efficiently attacks dirt from multiple directions leaving the floor cleaner in a single pass"

The Nilfisk SC500 walk-behind scrubber dryer is carefully designed to improve productivity and drive down your total cleaning costs. These significant benefits are achieved through more ease-of-use and a series of technical features enabling daytime cleaning and the most effective use of water and detergent. A reliable choice for cleaning companies, hospitals, schools, offices, supermarkets, shops, sports centers, restaurants, hotels, and production floors.



TECHNICAL DATA	SC500 53 B	SC500 53 B Full PKG	SC500 53R B
Voltage (V)	24	24	24
Rated power (W)	930	930	930
Sound pressure level (dB(A) BS 5415)	63 (60) ±3	63 (60) ±3	65 (63) ±3
Productivity theoretical/actual (m²/h)	2650/1590	2650/1590	2550/1530
Scrubbing width (mm)	530	530	508
Solution/recovery tank (l)	45/45	45/45	45/45
Brush/pad diameter (mm)	530/508	530/508	508/508
Brush quantity and type	1 Disc	1 Disc	1 REV
Brush speed (RPM)	155	155	0-30
Brush pressure (kg)	15/30	15/30	22/30
Max. speed (km/h)	5	5	5
Length x width x height (mm)	1277x720x1063	1277x720x1063	1277x720x1063
Squeegee width (mm)	720	720	720
Gross weight (gvw) (kg)	207	207	210
<b>FEATURES</b>			
Click on-off brush	•	•	
Ecoflex prepared	•	•	•
Delivered ready to use (full package)		•	
SmartKey system	•	•	•
Squeegee	•	•	•
SmartFlow system	•	•	•
Nilfisk SilenTech™	•	•	•
<b>STANDARD EQUIPMENT</b>			
HOSE FILLING SIP	9100000703	9100000703	9100000703
SMART KEY-SUPERVISOR	56116519	56116519	56116519
SMART KEY-USER	56116518	56116518	56116518
ECOFLEX DETERGENT KIT SC500		9100002395	
BRUSH DISC 530MM 21 PROLENE BLUE		L08837025	
BLADES SQUEE. 700MM 28 GUM RUBBER KIT	9100000810	9100000810	9100000810
BATT. 12V-105AH GEL MONOBLOC		80564400	
CHARGER BATT. O/B 24V 13A 100-230V KIT		9099995000	
<b>ITEM NO.</b>	<b>9087401020</b>	<b>9087400020</b>	<b>9087402020</b>



## Simple, trustworthy and cost effective scrubber dryer

- Easy to use with OneTouch™ button to activates allscrubbing functions
- Tilting recovery tank for easy access to batteries and chemicals
- Ergonomic pedal to easily lift and lower the deck
- Easy click-on and off system releases the brush/ pad effortlessly
- Excellent water pick-up

The SC530 is a simple, trustworthy and cost-effective scrubber dryer and the perfect choice for applications such as schools, hospitals, supermarkets and public buildings, as the SC530 allows to cover big areas reducing time and increasing productivity thanks to its 61 liter tank capacity.



TECHNICAL DATA	SC530 53 BD GO	SC530 53 B GO
Voltage (V)	24	24
Rated power (W)	800	800
Sound pressure level at 1.5 m (dB(A) ISO 3744)	69	69
Productivity theoretical/actual (m²/h)	2385/1431	2120/1272
Scrubbing width (mm)	530	530
Solution/recovery tank (l)	61/61	61/61
Brush/pad diameter (mm)	530/508	530/508
Brush speed (RPM)	150	150
Brush pressure (kg)	23	27
Length x width x height (mm)	1260x550x1080	1260x550x1080
Gross weight (gvw) (kg)	233	227
<b>FEATURES</b>		
With traction motor	•	
Blades can be used on 4 edges	•	•
Battery level indicator	•	•
Water level indicator	•	•
Ergonomic handle with two safety switches	•	•
Quick change system for squeegee blades	•	•
Squeezable drain hose with flow control	•	•
<b>STANDARD EQUIPMENT</b>		
BRUSH DISC 530MM 21 PROLENE BLUE	L08837025	L08837025
BLADES SQUEE. 740MM 29 GUM RUBBER KIT	9100000279	9100000279
24V 13A CHARGER KIT AGM WITH HARNESS	VS10267	VS10267
<b>ITEM NO.</b>	<b>50000335</b>	<b>50000336</b>



### Smarter design lowering your cleaning costs

- Low noise level for daytime cleaning
- OneTouch™ dashboard operation
- Ecoflex™ option, detergent mixing system
- No-tools for changing squeegee blades
- Easy access to recovery tank for cleaning and maintenance
- Traction version with large wheels for easy handling
- Waterproof electrical control box

The range of walk-behind scrubber dryers offers more of everything that is important for floor cleaning efficiency: more productivity, more running time, more ergonomic features, more reliability, more options and more cost-effectiveness.



TECHNICAL DATA	BA 551C D	BA 551 D w/drive	BA 611 D	CA 551
Rated power (W)	1330	1010	1230	1650
Sound pressure level at 1.5 m (dB(A) ISO 3744)	65.8	65.8	65.8	67.3
Productivity theoretical/actual (m²/h)	2860/1720	2970/1785	3420/2055	2120/1060
Scrubbing width (mm)	510	530	610	530
Solution/recovery tank (l)	55/55	55/55	55/55	55/55
Brush/pad diameter (mm)	-	530/508	305/305	530/508
Brush quantity and type	2 Cylindrical	1 Disc	2 Disc	1 Disc
Brush speed (RPM)	570	135	230	150
Brush pressure (kg)	26	21/28	21/28	30
Max. speed (km/h)	5.6	5.6	5.6	4
Length x width x height (mm)	1320x540x1090	1320x540x1090	1310x650x1090	1300x540x1090
Squeegee width (mm)	760	760	810	760
Gross weight (gvw) (kg)	258	255	256	186
<b>FEATURES</b>				
With traction motor	•	•	•	
Cable version				•
Battery version	•	•	•	
Interchangeable brush deck	•	•	•	•
Water level indicator	•	•	•	•
Ecoflex prepared	•	•	•	
Squeegee	•	•	•	•
<b>STANDARD EQUIPMENT</b>				
BLADES SQUEE. 740MM 29 GUM RUBBER KIT	9100000279	9100000279		9100000279
BLADES SQUEE. 830MM 33 GUM RUBBER KIT			9100000280	
CHARGER BATT. O/B 24V 13A 100-230V KIT	909 6739 000	909 6739 000	909 6739 000	
<b>ITEM NO.</b>	<b>908 7158 020</b>	<b>908 7157 020</b>	<b>908 7159 020</b>	<b>908 7150 020</b>





## Boost your productivity in large area cleaning

- Ecoflex™ option, detergent mixing system
- Extremely low noise level (down to 58 dB(A)) for daytime cleaning
- Combination of 86 cm scrubbing width, and large capacity tanks provide high productivity
- Robust construction, state of the art design and better materials offer more reliability and longer working life
- Interchangeable brush decks allow a choice of 3 different disc sizes or 71 cm cylindrical

The BA651/751/851 series represents a real innovation in the world of scrubber dryers and a concrete added value for cleaning professionals. Now all the machines are equipped with Ecoflex™ system, which keeps the consumption control, but it also guarantees the possibility to boost temporarily water, detergent and brush pressure for all the more aggressive cleaning tasks.



**TrackClean™**

TECHNICAL DATA	BA 651	BA 751	BA 751C	BA 851
Voltage (V)	24	24	24	24
Rated power (W)	1420	1420	1820	1420
Sound pressure level at 1.5 m (dB(A) ISO 3744)	58	58	58	58
Productivity theoretical/actual (m²/h)	3700/2200	3980/2390	3980/2390	4820/2895
Scrubbing width (mm)	660	710	710	860
Solution/recovery tank (l)	85/85	85/85	85/85	85/85
Brush/pad diameter (mm)	330/330	370/355	-	430/432
Brush quantity and type	2 Disc	2 Disc	2 Cylindrical	2 Disc
Brush speed (RPM)	220	220	613	220
Brush pressure (kg)	32/52	32/52	35	32/52
Max. speed (km/h)	5.6	5.6	5.6	5.6
Length x width x height (mm)	1500x600x1050	1500x600x1050	1470x600x1050	1570x600x1050
Squeegee width (mm)	890	890	890	1040
Gross weight (gvw) (kg)	470	470	470	470
<b>FEATURES</b>				
Disc brush version	•	•		•
Hopper for collecting debris			•	
Adjustable handle	•	•	•	•
Click on-off brush	•	•		•
Water level indicator	•	•	•	•
Ecoflex prepared	•	•	•	•
Squeegee				
<b>STANDARD EQUIPMENT</b>				
BLADES SQUEE. 890MM 35 GUM RUBBER KIT	9100000281	9100000281	9100000281	
BLADES SQUEE. 1040MM 41 GUM RUBBER KIT				9100000282
SPLASH GUARD DECK 650MM/26	909 5224 000			
SPLASH GUARD DECK 750MM/30		909 5345 000		
<b>ITEM NO.</b>	<b>9087240020</b>	<b>9087243020</b>	<b>9087246020</b>	<b>9087247020</b>



## Giving you superb results in heavy-duty cleaning

- Powerful brush and vac motors, high down pressure (up to 77 kg), outstanding cleaning and drying performance: the best answer for heavy duty "industrial" task
- Green oriented: complete consumption control: Ecoflex™ system, low noise level (only 61dB(A))
- Large 95 litre solution and recovery tanks give extra capacity for longer working time
- The scrub deck is protected with removable covers that prevent damage to walls and doors, while providing easy access for maintenance
- Right industrial shape in compact dimensions. No compromise on the ergonomic level and maneuverability

SC800 is designed for maximum performance, easy handling, low maintenance, superb cleaning results and yet it is an eco-friendly solution.



**TrackClean™**

TECHNICAL DATA	SC800-71	SC800-71C	SC800-86
Voltage (V)	24	24	24
Rated power (W)	1890	1910	1890
Sound pressure level at 1.5 m (dB(A) ISO 3744)	61	61	61
Productivity theoretical/actual (m²/h)	4120/2470	4120/2470	4990/2990
Scrubbing width (mm)	710	710	860
Solution/recovery tank (l)	95/95	95/95	95/95
Brush/pad diameter (mm)	355/355	-	430/432
Brush quantity and type	2 Disc	2 Cylindrical	2 Disc
Brush speed (RPM)	270	840	270
Brush pressure (kg)	36/77	36	36/77
Max. speed (km/h)	5.8	5.8	5.8
Length x width x height (mm)	1480x780x1130	1480x780x1130	1480x780x1130
Squeegee width (mm)	910	910	1050
Gross weight (gvw) (kg)	487	492	488
<b>FEATURES</b>			
Disc brush version	•		•
Front and rear bumpers	•	•	•
Cylindrical brush version		•	
Interchangeable brush deck	•	•	•
Adjustable brush pressure	•		•
Ecoflex prepared	•	•	•
Squeegee	•	•	•
<b>STANDARD EQUIPMENT</b>			
KIT-REFILLING HOSE	56112355	56112355	56112355
BLADE KIT-SQUEEGEE GUM	56112330		
BLADE KIT-SQUEEGEE LINATEX		56112331	
<b>ITEM NO.</b>	<b>56112034</b>	<b>56112036</b>	<b>56112035</b>



## Innovative stand-on scrubber dryer setting a new STANDARD

- Easy handling. Just step up and go OneTouch™ scrub ON/OFF switch and two brush pressure settings for securing high cleaning performance
- Intuitive dashboard with user-friendly menu for setting parameters for cleaning conditions and floor type
- 44 liter tank with electronic controlled water flow allows cleaning up to 75 minutes per tank
- Low noise level and a silent mode option, makes it ideal for sound sensitive areas and daytime cleaning
- Up to 3.5 hours battery running time and optional on board charger increase productivity, performance and reliability
- Ecoflex™ detergent mixing system(optional)

SC1500 is an innovative stand-on scrubber dryer providing you with superior efficiency due to unprecedented ease of use, increased performance, high quality and reliability. It is an investment in Nilfisk quality that will pay off year after year.



**TrackClean™**

TECHNICAL DATA	SC1500
Voltage (V)	24
Rated power (W)	840
Productivity theoretical/actual (m²/h)	2438/1707
Scrubbing width (mm)	510
Solution/recovery tank (l)	44/46
Brush quantity and type	1 Disc
Brush speed (RPM)	140
Brush pressure (kg)	23/40
Max. speed (km/h)	Fwd 4.8/Rev. 3.5
Length x width x height (mm)	1230x610x1330
Squeegee width (mm)	680
Gross weight (gvw) (kg)	326
<b>FEATURES</b>	
Battery version	•
One-Touch™ control panel	•
Debris tray	•
Ecoflex prepared	•
Squeegee	•
<b>STANDARD EQUIPMENT</b>	
DEBRIS CAGE KIT	56104360
KIT-REFILLING HOSE	56112355
SQUEEGEE KIT-BLADE-LINATEX	56104483
SKIRT BRUSH	56104240
<b>ITEM NO.</b>	<b>56104002</b>





## Micro ride-on scrubber dryer doubles cleaning output at price of walk-behind model

- Productive: 53 cm scrubbing width, high speed (6 km/h), 70/70 L
- Compact and comfortable: very compact dimensions for narrow areas, comfortable seat and wide space for operator's legs
- SmartFlow™ : solution flow of detergent/water automatically controlled by speed to have consistent cleaning and reduced consumptions
- Ideal for daytime cleaning: Nilfisk SilenTech™ technology keeps extreme low sound level in all conditions
- SmartKey™ system with Separate Supervisor and Operator keySettings effectively controlled
- Easy to control: Dashboard with OneTouch™ button; intuitive display integrated in the steering wheel
- Water filling system automatically shutoff water when the tank is full
- USB port as option
- Easy handling: Automatic brush click on/off and plastic light squeegee with patent elastic strap system
- Sustainable: Ecoflex™ system with flexible detergent setting and water-only cleaning. Self-adjusting brush speed according to floor type and application to save energy consumptions

The Nilfisk SC2000 mini ride-on scrubber dryer eases the working effort significantly compared a walk-behind machine. An attractive choice for cleaning of offices, supermarkets, sports centers, shops, restaurants, hotels, and institutions like hospitals and schools. Taking working speed up to 6 km/h – from an average 4 km/h with a walk-behind scrubber dryer – the SC2000 has a great impact on both productivity and cleaning costs.



TECHNICAL DATA	SC2000 53B	SC2000 53B Full PKG
Voltage (V)	24	24
Productivity theoretical/actual (m²/h)	3180/2230	3180/2230
Solution/recovery tank (l)	70/70	70/70
Brush/pad diameter (mm)	530/508	530/508
Brush quantity and type	1 Disc	1 Disc
Brush speed (RPM)	155	155
Brush pressure (kg)	15/30	15/30
Max. speed (km/h)	6	6
Length x width x height (mm)	1270x550x1020	1270x550x1020
Squeegee width (mm)	720	720
Gross weight (gvw) (kg)	342	342
<b>FEATURES</b>		
Automatic squeegee lift in reverse	•	•
Click on-off brush	•	•
Ecoflex prepared	•	•
SmartKey system	•	•
Squeegee	•	•
SmartFlow system	•	•
Nilfisk SilenTech™	•	•
<b>STANDARD EQUIPMENT</b>		
FILLING HOSE	9100000952	9100000952
SMART KEY-SUPERVISOR	56116519	56116519
SMART KEY-USER	56116518	56116518
ECOFLEX DETERGENT KIT SC2000		9100002389
BRUSH DISC 530MM 21 PROLENE BLUE		L08837025
BLADES SQUEEGEE 700MM 28 PU KIT	9100000490	9100000490
BATT. 12V-105AH GEL MONOBLOC		80564400
CHARGER BATT. O/B 24V 100-230V EU KIT		9100000940
<b>ITEM NO.</b>	<b>9087410020</b>	<b>9087411020</b>



### Revolutionary deck system giving you superb performance

- Sliding deck concept; maximum comfort and performance, minimum efforts and maintenance
- Squeegee concept; a stable and reliable squeegee for the best pick up performance
- Ecoflex™ system minimises the environmental impact without compromising performance
- Ergonomic steering wheel concept with all working functions fully integrated
- Patented automatic speed control that significantly increases operator safety
- Super compact design makes cleaning of restricted space areas fast and easy
- Low noise mode makes daytime cleaning and cleaning of noise sensitive areas viable

With the BR652/752 series everything can be done just moving the steering wheel; as the machine turns, so too does the deck. Together with the "intelligent" squeegee – which perfectly covers the scrubbing track without leaving traces – the Nilfisk concept delivers superb cleaning performance. This solution is so efficient that side skirts are no longer needed.



**TrackClean™**

TECHNICAL DATA	BR652	BR752
Voltage (V)	24	24
Rated power (W)	1500	1500
Sound pressure level at 1.5 m (dB(A) ISO 3744)	60 (57)	60 (57)
Productivity theoretical/actual (m²/h)	3960/2770	4260/2980
Scrubbing width (mm)	660	710
Solution/recovery tank (l)	80/80	80/80
Brush/pad diameter (mm)	330/330	370/355
Brush quantity and type	2 Disc	2 Disc
Brush speed (RPM)	230	230
Brush pressure (kg)	30/48	32/50
Max. speed (km/h)	6	6
Length x width x height (mm)	1360x670x1200	1360x750x1200
Squeegee width (mm)	890	890
Gross weight (gvw) (kg)	446	448
<b>FEATURES</b>		
Back up warning alarm	•	•
Ecoflex prepared	•	•
Automatic speed control system	•	•
Sliding deck system (no side skirt)	•	•
Antishock retractable deck	•	•
Solution tank with easy drain system	•	•
Squeegee	•	•
<b>STANDARD EQUIPMENT</b>		
TRAY DEBRIS KIT	9098712000	9098712000
BLADES SQUEEGEE 890MM 35 PU KIT	9099855000	9099855000
SPLASH GUARD DECK 650MM/26	909 5224 000	
SPLASH GUARD DECK 750MM/30		909 5345 000
<b>ITEM NO.</b>	<b>9087260020</b>	<b>9087262020</b>



### Better ergonomics, better reliability, better cleaning

- Ecoflex™ prepared: green, flexible, nice and easy
- User friendly, waterproof OneTouch™ control panel and easy to operate
- High manoeuvrability allows cleaning in congested areas
- Adjustable scrubbing pressure ensure a wide range of cleaning application from daily scrubbing to restoration
- Integrated vacuum motor with low noise level for daytime cleaning applications
- Operator's easy access from left and right side
- Large battery compartment enables a 400Ah battery tray for more than 4.5 hours running time

BR755/755C/855 is the generation of scrubber dryers, with focus on performance, ergonomics and reliability.



**TrackClean™**

TECHNICAL DATA	BR755	BR755C	BR855
Voltage (V)	24	24	24
Rated power (W)	2040	1920	2160
Sound pressure level at 1.5 m (dB(A) ISO 3744)	63.7	63.7	63.7
Productivity theoretical/actual (m²/h)	4470/3130	4470/3130	5360/3750
Scrubbing width (mm)	710	710	860
Solution/recovery tank (l)	106/106	106/106	106/106
Brush/pad diameter (mm)	355/355	-	430/432
Brush quantity and type	2 Disc	2 Cylindrical	2 Disc
Brush speed (RPM)	250	900	250
Brush pressure (kg)	40/65/96	27/36/45	40/65/96
Max. speed (km/h)	6.3	6.3	6.3
Length x width x height (mm)	1520x770x1310	1520x800x1310	1520x920x1310
Gross weight (gvw) (kg)	658	658	658
<b>FEATURES</b>			
Adjustable steering and seat	•	•	•
Back up warning alarm	•	•	•
One-Touch™ control panel	•	•	•
Polyurethane front & rear wheels	•	•	•
Fully external suction hose	•	•	•
Ecoflex prepared	•	•	•
Squeegee	•	•	•
<b>STANDARD EQUIPMENT</b>			
KIT SIDE SKIRT		56316194	
SKIRT BLADE KIT-GUM	56383488		56383488
BLADE KIT-SQUEEGEE-GUM 34			56382738
BLADE KIT-SQUEEGEE-GUM 28	56382734	56382734	
<b>ITEM NO.</b>	<b>56601014</b>	<b>56601016</b>	<b>56601015</b>





### Providing you with unique added value benefits in industrial cleaning

- Ecoflex™: green, flexible, nice and easy
- Modular scrub deck system, with different scrub deck options and numerous brushes, offers productive cleaning for different floor conditions
- Excellent traction for increased operator's safety
- Fast floor drying thanks to a innovative squeegee concept that provides maximum pick up, reliably and with simple adjustment
- Recovery tank inlet system with standard debris tray is cleaner and more efficient

The BR850S serie of ride-on scrubber dryers have long been renowned and praised for their reliability and working performance. The latest upgrades have now made this superb range of units even better.



**TrackClean™**

TECHNICAL DATA	BR850CS Ecoflex	BR850S Ecoflex
Voltage (V)	36	36
Rated power (W)	2810	2820
Sound pressure level at 1.5 m (dB(A) ISO 3744)	68	68
Productivity theoretical/actual (m²/h)	5430/3800	5430/3800
Scrubbing width (mm)	810	810
Solution/recovery tank (l)	157/157	157/157
Brush/pad diameter (mm)	-	410/406
Brush quantity and type	2 Cylindrical	2 Disc
Brush speed (RPM)	900	250
Brush pressure (kg)	24/42/70	32/69/113
Max. speed (km/h)	6.7	6.7
Length x width x height (mm)	1550x910x1350	1550x880x1350
Squeegee width (mm)	1050	1050
Gross weight (gvw) (kg)	705	705
<b>FEATURES</b>		
Adjustable steering and seat	•	•
Front and rear bumpers	•	•
Back up warning alarm	•	•
Cylindrical brush version	•	
Polyurethane front & rear wheels	•	•
Squeegee	•	•
Ecoflex installed	•	•
<b>STANDARD EQUIPMENT</b>		
KIT DEBRIS TRAY	56390779	56390779
BLADE-DECK LINATEX	56410335	
BLADE KIT-DISC GUM SIDE		56315722
BLADE KIT-SQUEEGEE-GUM 34		56382738
BLADE KIT-SQUEEGEE-LINATEX 34	56382739	
<b>ITEM NO.</b>	<b>56381011</b>	<b>56381009</b>



## The mid-size solution for high productivity and efficiency

- High productivity for value; cleans large spaces with optimal efficiency
- Better results; improved brush pressure and quicker drying time
- Fast, convenient, and ergonomic; automatic management of brush/squeegee
- Improved maneuverability and transport thanks to squeegee control

If you need big indoor performance from a more space-efficient scrubber dryer, the ride-on SC3500 is your ideal solution. With improvements to productivity, maneuverability, and ergonomics, this versatile addition to the Nilfisk GO-Line can handle massive commercial, educational, or industrial environments with ease.



TECHNICAL DATA	SC3500 GO	SC3500 GO FULL PKG 2	SC3500 GO FULL PKG 3	SC3500 GO OBC
Voltage (V)	24	24	24	24
Rated power (W)	2658	2658	2658	2658
Sound pressure level at 1.5 m (dB(A) ISO 3744)	69	69	69	69
Productivity theoretical/actual (m²/h)	4260/2980	4260/2980	4260/2980	4260/2980
Scrubbing width (mm)	710	710	710	710
Solution/recovery tank (l)	110/110	110/110	110/110	110/110
Brush/pad diameter (mm)	355/355	355/355	355/355	355/355
Brush quantity and type	2 disc	2 disc	2 disc	2 disc
Brush speed (RPM)	180	180	180	180
Brush pressure (kg)	30/50	30/50	30/50	30/50
Length x width x height (mm)	1620x760x1250	1620x760x1250	1620x760x1250	1620x760x1250
Gross weight (gvw) (kg)	545	545	545	545
<b>FEATURES</b>				
Automatic squeegee lift in reverse	•	•	•	•
Solution level indicator	•	•	•	•
Blades can be used on 4 edges	•	•	•	•
Click on-off brush	•	•	•	•
One-Touch™ control panel	•	•	•	•
Water level indicator	•	•	•	•
Battery indicator	•	•	•	•
<b>STANDARD EQUIPMENT</b>				
TRAY DEBRIS KIT	9100000795	9100000795	9100000795	9100000795
DISC BRUSH-14 PROLITE 3 LUG	56505805	56505805	56505805	56505805
BLADE KIT-SQUEEGEE-GUM 34	56382738	56382738	56382738	56382738
BATT.6V-222AH AGM MONOBLOC		80566222		
KIT CHARGER	VR31052	VR31052	VR31052	VR31052
BATT. 6V-180AH GEL MONOBLOC				80564000
BATT. 6V-200AH WET TUBULAR MONOBLOC			80563200	
BATTERY TRAY			VR10048	
<b>ITEM NO.</b>	<b>50000557</b>	<b>CM50000557-02</b>	<b>CM50000557-03</b>	<b>CM50000557-01</b>



## Efficient large area cleaning

- Intermittent SmartFlow™ lever integrated into steering wheel: Reduces water flow on the deck, preventing splashes during turns
- Speed limiter function reduces operator fatigue during cleaning especially when navigating around obstacles
- Available in 3 different versions: 86 cm or 105 cm dual discs deck or 91 cm dual cylindrical brushes deck
- Consistent cleaning: Designed for different types of surfaces, from smooth to tiles floors
- Best in class drying performance thanks to the optional dual turbine
- Reliable and rugged construction in compact dimensions
- Fully protected scrub deck and side skirts using rugged steel doors with rollers to minimize the risk of machine or facility damage
- SmartKey™ system with two different levels of access, (super user and user keys)
- OLED display visible in even bright light conditions and from all viewing angles
- No tools are needed to replace/change or inspect the main components of the machine: Brushes, squeegee and blades
- Click-on disc scrub brush system for simple one-touch installation of brushes or pad holders

The Nilfisk SC6000 is a next generation ride-on scrubber dryer with the size, speed, and technology to clean large indoor areas – at an extremely low Total Cost of Ownership.

Available in 3 different versions, SC6000 will be the ideal solution for many companies, industries, and cleaning contractors dealing with large indoor areas such as production sites, warehouses, supermarkets, airports, parking garages and other logistical centers.

**TrackClean™**



TECHNICAL DATA	SC6000 1050D	SC6000 860D	SC6000 910C
Voltage (V)	36	36	36
Rated power (W)	2700	2500	2700
Sound pressure level at 1.5 m (dB(A) ISO 3744)	69	69	69
Productivity theoretical/actual (m²/h)	9450/6620	7740/5420	8190/5730
Scrubbing width (mm)	1016	863	914
Solution/recovery tank (l)	190/190	190/190	190/190
Brush/pad diameter (mm)	508	430	180
Brush quantity and type	2 Disc	2 Disc	2 Cylindrical
Brush speed (RPM)	250	250	760
Brush pressure (kg)	up to 135	up to 135	up to 90
Length x width x height (mm)	1780x1170x1580	1780x990x1580	1780x1170x1580
Squeegee width (mm)	1230	1090	1230
Gross weight (gvw) (kg)	1070	1070	1075
<b>FEATURES</b>			
Diagnostic system	•	•	•
Click on-off brush	•	•	•
Debris tray	•	•	•
Ecoflex prepared	•	•	•
SmartKey system	•	•	•
Speed limiter	•	•	•
TrackClean ready	•	•	•
<b>STANDARD EQUIPMENT</b>			
ARM REST KIT-R/H ONLY	56383189	56383189	56383189
BACK-UP ALARM KIT	56116351	56116351	56116351
BEACON KIT	56116352	56116352	56116352
SEAT KIT-STANDARD	56116600	56116600	56116600
SMART KEY-SUPERVISOR	56116519	56116519	56116519
SMART KEY-USER	56116518	56116518	56116518
SQUEEGEE BLADE KIT-LINATEX J		56116704	
SQUEEGEE BLADE KIT- LINATEX K	56116705		56116705
SIDE BLADE KIT-LINATEX	56116706	56116706	56116706
<b>ITEM NO.</b>	<b>56116004</b>	<b>56116005</b>	<b>56116003</b>





## Your reliable choice for large area cleaning

- Scrubbing width of up to 1300 mm ensuring high productivity
- Water tank capacity of 265 liters enables the operator to work for 1.5 hours before refilling.
- High brush pressure, and effective drying enabled by a powerful vacuum motor
- AC traction unit reduces the total cost of ownership since the motor is maintenance free and has a high-quality gearbox
- Low noise level which enables work in noise sensitive areas and during the night
- OneTouch™ control makes the driving and controlling the SC6500 easy
- Ecoflex™ system is reducing cost by saving water and detergent which is essential when cleaning large areas

Nilfisk SC6500 is a highly productive machine for scrubbing and drying of large floor and indoor areas. It offers the best cleaning performance in its class, including the unique Ecoflex-system. Being easy to use for the staff – even for hard cleaning tasks – the SC6500 is ideal for big supermarkets, warehouses, airports, parking areas, food industries and heavy industries.



TECHNICAL DATA	SC6500 1100C	SC6500 1100D	SC6500 1300C	SC6500 1300D
Voltage (V)	36	36	36	36
Productivity theoretical/actual (m²/h)	9000/6300	9000/6300	11700/8190	11700/8190
Scrubbing width (mm)	1000	1000	1300	1300
Solution/recovery tank (l)	265/265	265/265	265/265	265/265
Brush/pad diameter (mm)	-	510/508	-	430/432
Brush quantity and type	2 Cylindrical	2 Disc	2 Cylindrical	3 Disc
Brush speed (RPM)	630	240	630	225
Brush pressure (kg)	38/54/90	43/90/145	38/54/90	43/90/145
Max. speed (km/h)	9	9	9	9
Length x width x height (mm)	1870x1210x1480	1870x1080x1480	1870x1410x1480	1870x1330x1480
Gross weight (gvw) (kg)	1508	1460	1547	1506
<b>FEATURES</b>				
Back up warning alarm	•	•	•	•
Blades can be used on 4 edges	•	•	•	•
Disc deck		•		•
Cylindrical deck	•		•	
Ecoflex prepared	•	•	•	•
Break-away squeegee clips	•	•	•	•
Squeegee	•	•	•	•
<b>STANDARD EQUIPMENT</b>				
SIDE BROOM	56413056		56413056	
LEFT SIDE BROOM ASSEMBLY	56413039		56413039	
RIGHT SIDE BROOM ASSEMBLY	56413040		56413040	
BLADE KIT-DISC LINATEX				56413770
BLADE KIT-DISC LINATEX 40		56413768		
SKIRT-BLADE-SIDE-LINATEX	56413654		56413654	
BLADE KIT-SQEGEE LINATEX F	56413762	56413762		
BLADE KIT-LINATEX SQUEEGEE H			56413766	56413766
<b>ITEM NO.</b>	<b>56414023</b>	<b>56414022</b>	<b>56414025</b>	<b>56414024</b>



## Ensuring you productive and powerful cleaning with green scope

- The widest counter rotating dual cylindrical scrub deck in its class increasing the efficiency.
- Time-saving high volume tanks of 380 litres to enable cleaning of more than 9.200 m<sup>2</sup> without refill.
- Safe and easy operation with One-Touch™ control panel, front steering system and clear-View™ design providing an excellent view of the floor.
- Environmental friendly for both operator and surroundings with DustGuard™ misting system improving the dust free cleaning.
- Kubota powered engine means superior reliability with gear driven valve train.
- Reduced maintenance costs as there is no downtime due to repair of belts or chains on the engine.
- Ecoflex system guiding the user to a greener and more cost-effective cleaning mode, limiting the use of water and detergent.

SC8000 offers a more productive, powerful, and greener solution for scrubbing and wet sweeping of large areas – carried out in the most resource-saving and cost-effective way.



TECHNICAL DATA	SC8000 1300 D	SC8000 1300 LPG	SC8000 1600 D	SC8000 1600 LPG
Sound pressure level at 1.5 m (dB(A) ISO 3744)	83	84	83	84
Productivity theoretical/actual (m <sup>2</sup> /h)	15860/11100	15860/11100	19760/13830	19760/13830
Scrubbing width (mm)	1220	1220	1520	1520
Solution/recovery tank (l)	380/380	380/380	380/380	380/380
Brush/pad diameter (mm)	280x1220	280x1220	280x1220	280x1220
Brush quantity and type	2 Cylindrical	2 Cylindrical	2 Cylindrical	2 Cylindrical
Brush speed (RPM)	470	470	470	470
Brush pressure (kg)	55/110/180	55/110/180	55/110/180	55/110/180
Max. speed (km/h)	13	13	13	13
Length x width x height (mm)	2540x1420x1470	2540x1420x1470	2540x1670x1470	2540x1670x1470
Squeegee width (mm)	1520	1520	1520	1520
Gross weight (gvw) (kg)	1730	1730	1834	1834
<b>FEATURES</b>				
Tip out recovery tank	•	•	•	•
Automatic squeegee lift in reverse	•	•	•	•
Cylindrical deck: 2 brushes	•	•	•	•
Misting system	•	•		
Dual sweep units	•	•	•	•
Right scrub unit			•	•
Squeegee	•	•	•	•
<b>STANDARD EQUIPMENT</b>				
BROOM POLY SIDE	56462252	56462252		
BACK UP ALARM KIT	56305519	56305519	56305519	56305519
LEFT SIDE BROOM WITH MISTING K			56111670	56111670
KIT WARNING BEACON	56110907	56110907	56110907	56110907
BLADE KIT MAIN SCRUB-LINATEX	56111206	56111206	56111206	56111206
BLADE KIT-RT SCRUB-LINATEX			56111635	56111635
BLADE KIT-SQGEE-LINATEX-H	56111650	56111650	56111650	56111650
BLADE-SQGEE-LINATEX-RR-H	56413642	56413642	56413642	56413642
<b>ITEM NO.</b>	<b>56108125</b>	<b>56108124</b>	<b>56108127</b>	<b>56108126</b>







## Hybrid and ePower combi machines

- ClearView™ sightlines and automatic speed reduction in turns for safer operation
- Tools-free tilt-out/lift-off recovery tank with integrated SmartFlow™
- Available with patented DustGuard™ airborne dust suppression technology
- High-capacity 285 liter front dry sweeper debris hopper with high-lift system
- Standard dual side brooms sweep entire squeegee path to minimize fouling
- Hybrid combination machine. Fuel less consumption, less. High running time on battery variant
- Retractable offset deck and breakaway squeegee. Generation filtration system, variable filter shaking
- OneTouch™, MaxAccess, NoTools™. More efficient service, extreme commonality among platforms.
- Hybrid technology and Ecoflex™
- Heated water, High pressure washer

GREENER, CLEANER, SMARTER.

CS7010 reinvents an entire class of equipment by reducing total cost of ownership, including operation, labor and maintenance, while effectively increasing fuel economy and runtime efficiency. Now the most economical solution is also the most ecological.

**TrackClean™**



TECHNICAL DATA	CS7010 1200B	CS7010 1200D HYBRID	CS7010 1200LPG HYBRID	CS7010 1200 PETROL HYBRID
Motor power source	-	D1305, 3 cyl, 29 Hp (21.7 kW)	WG972, 3 cyl, 30 Hp (22 kW)	
Max. speed (km/h)	8.9	8.9	8.9	8.9
Productivity theoretical/actual (m²/h)	11080/7756	11080/7756	11080/7756	11080/7756
Sweeping width (mm)	1540	1540	1540	1540
Scrubbing width (mm)	1245	1245	1245	1245
Min. turn-around aisle width (cm)	259/264	259/264	259/264	259/264
Solution/recovery tank (l)	284	284	284	284
Hopper volume (l)	198	198	198	198
Max. climbing rate (%)	17.6	17.6	17.6	17.6
Length x width x height (mm)	2620x1650x1500	2620x1650x1500	2620x1650x1500	2620x1650x1500
Gross weight (gvw) (kg)	2593	2058	2121	2058
<b>FEATURES</b>				
Diagnostic system	•	•	•	•
Direct throw sweeping	•	•	•	•
Wet sweep by-pass	•	•	•	•
Ecoflex prepared	•	•	•	•
Multi-frequency filter shaker	•	•	•	•
Break away Squeegee	•	•	•	•
Scrubbing and sweeping	•	•	•	•
<b>STANDARD EQUIPMENT</b>				
FILTER-RECTANGULAR SYNTHETIC	56510354	56510354	56510354	56510354
BROOM-SIDE POLY	56510707	56510707	56510707	56510707
ARM REST KIT-R/H ONLY	56383189	56383189	56383189	56383189
BACK-UP ALARM KIT	56511843	56511843	56511843	56511843
FLOOR MAT KIT	56509994	56509994	56509994	56509994
WARNING BEACON KIT	56511851	56511851	56511851	56511851
BROOM MAIN 310X900 SPIRAL 6R MIX STEEL	33018858	33018858	33018858	33018858
BLADE KIT-DECK-LINATEX	56510374	56510374	56510374	56510374
BLADE KIT-SQEGEE-LINATEX	56510371	56510371	56510371	56510371
<b>ITEM NO.</b>	<b>56511816</b>	<b>56511815</b>	<b>56511821</b>	<b>56511818</b>





## Heavy-duty performance giving you impressive productivity

- Wide scrubbing area (137 cm), a sweeping width of 152 cm, 9 km/h working speed, plus 380 litres capacity solution and recovery tanks provide high productivity
- Huge hopper with 454 litre capacity provides increased operational time, and a dump height of 152 cm for emptying into any container
- Oil and grease is removed in one pass thanks to 272 kg scrubbing pressure
- Power steering for improved ergonomics
- Adjustable scrubbing pressure provides first class cleaning regardless of dirt level or floor condition

When the demand is for a machine capable of really heavy-duty industrial cleaning application, CR1500 supplies the answer.



TECHNICAL DATA	CR1500 LPG
Motor power source	LPG
Max. speed (km/h)	9
Productivity theoretical/actual (m <sup>2</sup> /h)	12330/8630
Sweeping width (mm)	1520
Scrubbing width (mm)	1370
Min. turn-around aisle width (cm)	305
Solution/recovery tank (l)	380/380
Hopper volume (l)	454
Fuel tank (l)	35
Max. climbing rate (%)	14
Length x width x height (mm)	2720x1500x1560
Gross weight (gvw) (kg)	2353
<b>FEATURES</b>	
Disc brush version	•
Tip out recovery tank	•
Automatic solution shut off	•
Panel filter with shaker	•
Power steering	•
Direct throw sweeping	•
Variable high dump system	•
<b>STANDARD EQUIPMENT</b>	
FILTER PANEL	7-24-04046
BROOM CURB POLYFIBRE 2000 DCA	8-08-03107
MAIN BROOM	8-08-03180
KIT REAR SQUEEGEE 7765/CR1500	56514860
KIT SIDE SQUEEGEE 7765/CR1500	56514859
BACK-UP ALARM	56409232
<b>ITEM NO.</b>	<b>56514852</b>



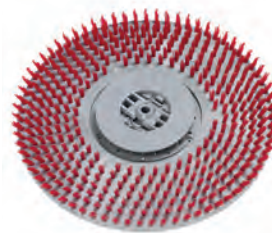
### Cylindrical brush

For uneven floors, such as ceramics anti-slip floors (various models are available)



### Brush

Used on uneven floors when debris collection is not needed (various models are available)



### Pad holder

Used for pads



### PADS

Various pads are available  
**Black & brown:** Heavy-duty  
**Green & blue:** Medium-duty  
**Red:** Light-duty



### Splash guard kit

Prevents the water from splashing on to the brush deck. Enables the squeegee to recollect all water



### Beacon kit

Used on a ride-on scrubber/dryer particularly in industry to warn about the presence of the machine



### Kit, vacuum motor

Allows squeegee better suction. Particularly useful when 100% recollection of water is needed



### Kit, grammer seat

Better comfort to the operator



### Onboard filling hose

Makes it easy to refill the machine anywhere



### Blades

Various squeegee blade materials are available depending on the application and on the duty; gum, red gum and polyurethane



### Wand kit

Allows the operator to clean difficult to reach areas



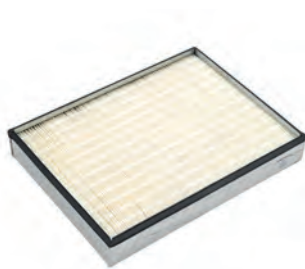
### On board charger



### Ecoflex chemical kit

Ecoflex allows full control of the detergent to be used, less risk of damaging the floors due to overdosage, flexibility in the detergent selection (available for traction scrubber dryes and combi machines)

# Overview of accessories

**Panel filter**

The panel filter function is to control the dust in the hopper, it is water resistant as standard

**Side broom**

The side broom function is to sweep the dirt and debris away from the kerbs, walls, pallets etc. into the path of the main broom

**Main broom**

The main broom has an effective cleaning action to pick-up debris (industry)

**Scrub brush**

We provide brushes and pad holders that will give you the best possible cleaning performance



**Heated water and high pressure washer options**  
(CS7000 only) – Improve cleaning efficiency and flexibility



**Overhead guard**  
Protects the operator, recommended especially in industrial application



**Cleaning out kit**  
Allows a better cleaning/access to the recovery tank



**Tower bumper kit**  
Protects the corners of the machine



**Charger**  
Can charge both wet and maintenance free batteries



**Charger plugs**



**High frequency charger**  
Can charge both wet and maintenance free batteries

The charger comes in different sizes depending on the size of battery for which it is intended











## Push your cleaning to a new level

- Direct-throw system to ensure excellent sweeping performance
- Capacity for long time cleaning: 38-litre hopper, which can be kept open for disposal of big items, emptying of garbage bins, etc.
- Easy to maneuver: Large non-marking wheels make pushing and steering simple for the user
- Handles dust well: Built-in filter for improved dust control and user comfort
- Solid and suited for outdoor use: Rugged corrosion proof frame
- Virtually service free: Simple mechanical construction with gear and belt drive. No motor or battery
- The handle can be adjusted to fit the operator height (3 positions)
- The hopper remains in place even when the sweeper is stored in an upright position or hung on the wall

Keeping your premises in good and inviting condition for customers and employees has never been easier. The Nilfisk walk-behind sweeper, available in model SW200 and SW250, offers an impressive performance in outdoor spaces as well as indoor floors. Compared to a manual broom, it will pick up and remove dust, dirt, sand, nails, bolts, cigarettes, etc. up to 6 times faster.



TECHNICAL DATA	SW200	SW250
Productivity 1 side broom theoretical/actual (m <sup>2</sup> /h)	2800/1400	2800/1400
Productivity 2 side brooms theoretical/actual (m <sup>2</sup> /h)	-	3680/1840
Working width with right side broom (mm)	700	700
Working width with 2 side brooms (mm)	-	920
Hopper volume (l)	38	38
<b>FEATURES</b>		
Two side brooms		•
Adjustable handle	•	•
Soft handle	•	•
Ergonomic handle	•	•
Folding handle	•	•
<b>STANDARD EQUIPMENT</b>		
FILTER	VP11902	VP11902
SIDE BROOM	VP11406	VP11406
MAIN BROOM	VP11211	VP11211
<b>ITEM NO.</b>	<b>50000493</b>	<b>50000494</b>



## Quiet and easy cleaning helps you achieve maximum productivity

- Theoretic productivity of 2.880 m<sup>2</sup> per hour
- Very low noise level allows sweeping in noise sensitive areas
- Standard delivered with battery and onboard charger.
- Provides up to 2 hours run time on hard floors (approximately 6.000 m<sup>2</sup>).
- Optional battery increases running time to 3.5 hours
- Main and side brooms are adjustable
- Can be used both in and outdoors, washable polyester filter and filter shaker is standard

This battery powered, truly versatile sweeper can go anywhere and be used for cleaning everything from retail areas to gas stations. With the carpet kit, it can even clean soft floors.



TECHNICAL DATA	SW750	SW750 w/o battery
Motor power source	Battery 12V	Battery 12V
Max. speed (km/h)	4	4
Productivity 1 side broom theoretical/actual (m <sup>2</sup> /h)	2880/1730	2880/1730
Productivity 2 side brooms theoretical/actual (m <sup>2</sup> /h)	-	-
Working width with right side broom (mm)	720	720
Working width with 2 side brooms (mm)	-	-
Sound pressure level (dB(A))	59	59
Hopper volume (l)	60	60
Max. dumping height (cm)	-	-
Max. climbing rate (%)	20	20
Length x width x height (mm)	998x800x1100	998x800x1100
Operating weight (kg)	68	68
<b>FEATURES</b>		
LED battery meter	•	•
Compact design	•	•
Direct throw sweeping	•	•
Non marking traction wheels	•	•
Adjustable handle	•	•
Manual filter shaker	•	•
<b>STANDARD EQUIPMENT</b>		
FILTER POLYESTER KIT	1463161000	1463161000
BROOM SIDE 109X315 PPL 0.5	146 3035 000	146 3035 000
BROOM MAIN 200X500 CHEVRON 6R PPL 0.7	1463174000	1463174000
BATTERY 12V 49AH AGM MONOBLOC	1464483000	
CHARGER BATT. ON BOARD 12V 6A 100-230V	146 3051 000	146 3051 000
<b>ITEM NO.</b>	<b>908 4701 010</b>	<b>9084708010</b>



## SW900 will offer you higher cleaning performance and productivity

- All controls can be overviewed and reached from operator position
- More comfortable to maneuver with ergonomic handlebar
- Easier to adjust speed: Traction lever integrated in handlebar
- The hopper, holding 60 litre, easy to pull off sweeper
- Side broom control on handlebar
- Automatic on/off when side broom is lowered/raised
- Quicker and more effective cleaning of filter: Electric shaker system

SW900 walk-behind sweeper for both indoor and outdoor use offers dust free removal of dry debris. It will increase your everyday productivity through new valuable benefits: Total control from operator position, improved ergonomics with hopper on wheels, and higher cleaning performance.



TECHNICAL DATA	SW900 B	SW900 P
Motor power source	Battery	Petrol
Max. speed (km/h)	4.5	4.5
Productivity 1 side broom theoretical/actual (m²/h)	3715/2230	3715/2230
Productivity 2 side brooms theoretical/actual (m²/h)	4725/2835	4725/2835
Working width with right side broom (mm)	825	825
Working width with 2 side brooms (mm)	1050	1050
Sound pressure level (dB(A))	70	78
Hopper volume (l)	60	60
Max. climbing rate (%)	20	20
Length x width x height (mm)	1390x870x1100	1390x870x1100
Operating weight (kg)	143	88.5
<b>FEATURES</b>		
Dust collection	•	•
Electrical filter shaker	•	•
Battery version	•	
Battery Meter	•	
Petrol version		•
Wet sweep by-pass	•	•
Onboard charger	•	
<b>STANDARD EQUIPMENT</b>		
FILTER POLYESTER	1464691000	1464691000
BROOM SIDE 109X315 PPL 0.5	146 3035 000	146 3035 000
COUNTER HOUR 24V KIT	9096951000	9096951000
FILTER SHAKER ELECTRIC KIT	1467677000	1467677000
BROOM MAIN 265X600 CHEVR. 6R PPL 0.5-0.8	1465215000	1465215000
CHARGER BATT. ON BOARD 12V 25A SIP	1466519000	
<b>ITEM NO.</b>	<b>9084110010</b>	<b>9084111010</b>



## You get the job done quickly, discreetly and efficiently

- Theoretical productivity rate of 5.500 m<sup>2</sup> per hour
- It turns in less than 2 meter, 3 m<sup>2</sup> of panel filter, 50 l of hopper capacity with a climbing ability up to 16%, and other top performance features
- Top safety features include emergency stop button, hood intralock switch and safety seat switch
- SR1000S can also clean carpet areas, using the optional carpet kit

SR1000S works fast, is very compact and manoeuvrable. Comes in either a battery or petrol version for indoor or outdoor work and is durable to withstand tough working conditions. Recommended for loading bays, station platform or warehouses with narrow aisles.



TECHNICAL DATA	SR1000S B w/left side broom	SR1000S P w/left side broom
Motor power source	Battery 24V	Petrol, 2.2kW/2.9Hp
Max. speed (km/h)	5.5	5.5
Productivity 1 side broom theoretical/actual (m <sup>2</sup> /h)	-	-
Productivity 2 side brooms theoretical/actual (m <sup>2</sup> /h)	5500/3850	5500/3850
Working width with right side broom (mm)	-	-
Working width with 2 side brooms (mm)	1000	1000
Sound pressure level (dB(A))	71.6	77
Hopper volume (l)	50	50
Max. dumping height (cm)	-	-
Max. climbing rate (%)	20	20
Length x width x height (mm)	1255x795x1155	1255x795x1155
Operating weight (kg)	224	203
<b>FEATURES</b>		
Flap lifting device	•	•
Adjustable steering and seat	•	•
Electrical filter shaker	•	•
Hopper with wheels and handle	•	•
Key switch	•	•
Parking brake	•	•
Two side brooms	•	•
<b>STANDARD EQUIPMENT</b>		
FILTER PAPER	146 1888 000	146 1888 000
BROOM SIDE 180X350 NYLON	146 0678 000	146 0678 000
BROOM MAIN 265X600 CHEVRON 6R PPL 0.7	146 0748 000	146 0748 000
<b>ITEM NO.</b>	<b>908 4201 010</b>	<b>908 4205 010</b>





## Ensures you economical and productive cleaning

- Battery version offers up to 5 hours of running time
- Climbing rate up to 20%
- A large flap and 70 l of hopper to easy collect dirt and large debris
- 4,3 m<sup>2</sup> of filter for an optimal dust control
- Strong polyethylene construction plus steel frame; with robust solutions to avoid sources of malfunctions and minimise service
- Theoretical productivity of 4900 m<sup>2</sup> per hour with the optional left side broom
- The standard version is delivered with 1 main broom, 1 right side broom and 1 paper filter

The vast majority of ride-on professional sweeping jobs demand a machine that is compact, manoeuvrable and reliable. SR1101 represents simplicity and robustness in its most sophisticated form. Recommended for factory warehouses, car parks and outside areas such as parks and gardens.



TECHNICAL DATA	SR1101 B	SR1101 P
Motor power source	Battery 24V	Petrol 2.9kW/3.9Hp
Max. speed (km/h)	5	5
Productivity 1 side broom theoretical/actual (m <sup>2</sup> /h)	4900/3430	4900/3430
Productivity 2 side brooms theoretical/actual (m <sup>2</sup> /h)	6300/4410	6300/4410
Working width with right side broom (mm)	980	980
Working width with 2 side brooms (mm)	1260	1260
Sound pressure level (dB(A))	63.8	78.3
Hopper volume (l)	70	70
Max. dumping height (cm)	-	-
Max. climbing rate (%)	20	20
Length x width x height (mm)	1480x930x1220	1480x930x1220
Operating weight (kg)	465	392
<b>FEATURES</b>		
Flap lifting device	•	•
Electrical filter shaker	•	•
Back up warning alarm	•	•
Low dump	•	•
Wet sweep by-pass	•	•
Forward & backward pedal	•	•
<b>STANDARD EQUIPMENT</b>		
FILTER PAPER PANEL	1463523000	1463523000
BROOM SIDE 180X400 MIX STEEL	1466140000	1466140000
BROOM MAIN 300X700 CHEVR. 6R PPL 0.5-0.7	145 4879 000	145 4879 000
<b>ITEM NO.</b>	<b>9084310010</b>	<b>9084312010</b>



## One Touch sweeping minimising your operational costs

- One Touch Sweeping makes it easy to operate SW4000 since all functions – main broom, side brooms, vacuum fan and the optional DustGuard are activated and terminated simultaneously
- SW4000 is also gentle to the environment with minimized energy consumption, recyclable materials, dust control and low noise level
- The retractable, spring loaded side brooms, spring away on impacts, which means that they do not break or damage the inventory they touch
- The optional DustGuard™ misting system adds to the dust free sweeping improving the environment for operator as well as the surroundings
- The high hydraulic dump ensures safe handling and fast dumping increasing the high productivity level and reliability of SW4000
- All systems are controlled by the motion pedal, it saves power and broom wear and since all moving parts are run by electric motors they only consume energy when running
- The comfortable operator compartment is easy to access, has adjustable seat and the retractable hopper can be closed from the compartment

SW4000 is a ride-on sweeper with high dump designed for maximum performance, reliability, minimizing downtime and your operational costs. It is the obvious choice for industry and manufacturing, warehouses, distribution centers, school yards, shopping malls, parking lots, sport centers, recycling facilities, multi-storey car parks and more. It is equally suitable for outdoors as indoors cleaning depending on selected power source, battery, LPG or petrol (only outdoors).

**TrackClean™**



TECHNICAL DATA	SW4000 B	SW4000 LPG	SW4000 P
Motor power source	Battery 24V	LPG Honda 4.1 kW	Petrol Honda 4.1 kW
Max. speed (km/h)	7	7	7
Productivity 1 side broom theoretical/actual (m²/h)	6825/4780	6825/4780	6825/4780
Productivity 2 side brooms theoretical/actual (m²/h)	8750/6125	8750/6125	8750/6125
Working width with right side broom (mm)	975	975	975
Working width with 2 side brooms (mm)	1250	1250	1250
Sound pressure level (dB(A))	65	75	75
Hopper volume (l)	75	75	75
Max. dumping height (cm)	150	150	150
Max. climbing rate (%)	20	20	20
Length x width x height (mm)	1640x1035x1330	1640x1035x1330	1640x1035x1330
Operating weight (kg)	824	622	594
<b>FEATURES</b>			
Flap lifting device	•	•	•
Electrical filter shaker	•	•	•
Hour Meter	•	•	•
Battery Meter	•		
Variable high dump system	•	•	•
Wet sweep by-pass	•	•	•
<b>STANDARD EQUIPMENT</b>			
FILTER PANEL POLYESTER ULTRA WEB	1464839000	1464839000	1464839000
BROOM SIDE 280X450 MIX STEEL	1465318000	1465318000	1465318000
MAT FLOOR KIT	1464957000	1464957000	1464957000
BEACON KIT	1464948000	1464948000	1464948000
BROOM MAIN 340X700 CHEVRON 6R PPL 0.8	1463913000	1463913000	1463913000
<b>ITEM NO.</b>	<b>9084400010</b>	<b>9084402010</b>	<b>9084401010</b>



## SW5500 – the real Industrial Hybrid powered sweeper in the industry

- 25–30% increased sweeping performance with a worn main broom versus traditional sweeping system
- 30% increased hopper filling gives higher productivity as less time is spent dumping the debris
- The first real hybrid industrial sweeper on the market: flexible cleaning, low emissions and low noise
- Main broom adjustment easy to check by pushing a button
- All sweeping functions activated by OneTouch™ button and pressing the drive pedal
- All functions automatically stop when not driving to reduce consumptions
- High quality components and assembly
- Automatic speed reduction in tight curves and operating the hopper
- Warning alarm and reduced hopper lifting speed on slopes
- DustGuard™ system to reduce dust created by the side brooms
- Parallelogram concept on side broom for better and consistent sweeping performance
- Climb 20% on ramp/slopes while sweeping

The SW5500 offers a highly productive, comfortable and cost-effective way to sweep large floors and outdoor areas of dust and debris. A ride-on sweeper with the size and capacity to speed up your cleaning. Daily benefits like creating a safer environment and lowering the total costs of ownership make this machine an attractive choice for contract cleaners, industrial sites and factories, warehouses, distribution centers, sports arenas, parking lots of large retail stores or shopping malls, multi-store car parks, etc.



TECHNICAL DATA	SWEeper SW5500 B	SWEeper SW5500 D	SWEeper SW5500 LPG
Motor power source	Battery 24V	Diesel, Yanmar 4.1 kW	LPG, Honda 6.3 kW
Max. speed (km/h)	9	10	10
Productivity 1 side broom theoretical/actual (m²/h)	10575/7405	11750/8225	11750/8225
Productivity 2 side brooms theoretical/actual (m²/h)	13500/9450	15000/10500	15000/10500
Working width with right side broom (mm)	1175	1175	1175
Working width with 2 side brooms (mm)	1500	1500	1500
Sound pressure level (dB(A))	68	85	79
Hopper volume (l)	150	150	150
Max. dumping height (cm)	165	165	165
Max. climbing rate (%)	20	20	20
Length x width x height (mm)	1875x1200x1565	1875x1200x1565	1875x1200x1565
Operating weight (kg)	1101	838	871
<b>FEATURES</b>			
Charging indicator	•		
Multi-frequency filter shaker	•	•	•
Electric start		•	•
Speed indicator	•	•	•
Overheat indicator		•	•
Main broom worn alarm	•	•	•
Timed multi-frequency filter shaker	•	•	•
<b>STANDARD EQUIPMENT</b>			
FILTER PANEL PAPER ULTRA WEB	1467174000	1467174000	1467174000
BROOM SIDE 302X500 PPL 1.5 BLACK	1466670000	1466670000	1466670000
BEACON KIT	1464948000	1464948000	1464948000
BROOM MAIN 360X850 8R PPL 0.8	1465717000	1465717000	1465717000
<b>ITEM NO.</b>	<b>9084410010</b>	<b>9084412010</b>	<b>9084411010</b>



## Technically advanced sweeper that reduce your cleaning costs

- Excellent machine manoeuvrability thanks to the power steering (STD)
- Nilfisk DustGuard™ system completely controls airborne dust to reduce cleaning time
- Free floating main broom and fine tuning knob adjustment increases productivity and performance
- MaxAccess™ system provides fast and easy access to facilitate servicing
- The strong yet lightweight rotomoulded polyethylene covers and bumpers over a steel chassis provide automobile industry quality protection
- NoTools™ system speeds main broom and side broom changing cutting down on service time

SR1601 is claimed to be the most technically advanced sweeper in its category, with innovations that increase cleaning productivity whilst simplifying operating and servicing requirements. Designed for industrial applications such as heavily soiled factories, construction sites, parking etc.



TECHNICAL DATA	SR 1601	SR 1601 D	SR 1601 HD	SR 1601 LPG	SR 1601 MAXI	SR 1601 MAXI	SR 1601 MAXI
Motor power source	Battery 48V	Diesel, 3cyl. 16,3 kW	Diesel, 3cyl. 16,3 kW	LPG, 3cyl. 23.1kW/31HP	Diesel, 3cyl. 16,3 kW/	Battery 48V	LPG, 3cyl. 23.1kW/31HP
Max. speed (km/h)	8	12	12	12	12	8	12
Productivity 1 side broom theoretical/actual (m²/h)	10000/7000	15000/10500	15000/10500	15000/10500	10000/7000	10000/7000	10000/7000
Productivity 2 side brooms theoretical/actual (m²/h)	12800/8960	19200/13440	19200/13440	19200/13440	19200/13440	12800/8960	19200/13440
Working width with right side broom (mm)	1250	1250	1250	1250	1250	1250	1250
Working width with 2 side brooms (mm)	1600	1600	1600	1600	1600	1600	1600
Sound pressure level (dB(A))	69.5	88	88	87	88	69.5	87
Hopper volume (l)	315	315	315	315	315	315	315
Max. dumping height (cm)	159	159	159	159	159	159	159
Max. climbing rate (%)	20	25	25	25	25	20	25
Length x width x height (mm)	2220x1320x1460	2220x1320x1460	2220x1320x1460	2220x1320x1460	2220x1320x1460	2220x1320x1460	2220x1320x1460
Operating weight (kg)	1295	1050	1268	1052	1070	1315	1072
<b>FEATURES</b>							
Left side broom ppl					•	•	•
Power steering	•	•	•	•	•	•	•
Adjustable steering					•	•	•
Misting system					•	•	•
Adjustable seat	•	•	•	•	•	•	•
<b>STANDARD EQUIPMENT</b>							
FLTR PANEL ULTRA-WEB CELLULOSE	8-24-04139-1	8-24-04139-1	8-24-04139-1	8-24-04139-1	8-24-04139-1	8-24-04139-1	8-24-04139-1
BROOM LEFT SIDE PPL KIT					33019173	33019173	33019173
BROOM SIDE 300X500 PPL 1.5	33021313	33021313	33021313	33021313	33021313	33021313	33021313
ARMREST RT SEAT KIT	33019556	33019556	33019556	33019556	33019556	33019556	33019556
HOPPER PROTECTION KIT			33021392				
PRE MISTING SYST. 12V KIT					33019175		33019175
PRE MISTING SYST. 48V KIT						33019377	
PULLEY D3 HT KUBOTA KIT			33020810				
STEERING ADJUSTABLE KIT					33019174	33019174	33019174
WHEELS FOAMED KIT		33022245	33022245	33022245	33022245		33022245
WHEELS SOLID KIT	33023020					33023020	
AMBER STROBE NO OHG	56507038	56507038	56507038	56507038	56507038	56507038	56507038
BROOM MAIN 310X900 CHEVRON 6R PPL 0.7	33018853	33018853		33018853	33018853	33018853	33018853
BROOM MAIN 310X900 CHEVRON 6R PPL 1.0			33021206				
HOPPER DUST FLAP KIT			33020372				
ITEM NO.	13300103	13300101	13300175	13300105	13300148	13300149	13300161





## Professional cleaning that wouldn't let you down – ever!

- The unique DustGuard™ feature with misting nozzles sprays a fine fog of moisture to the front and side brooms, effectively controlling airborne dust for a cleaner environment.
- The main broom 1.3 meter sweeping path is the widest in the industry, providing you better performance and faster cleaning.
- With side brooms the total cleaning width of SW8000 is 2 meters.
- The strong polyethylene covers offer a high driving protection and even absorbing bumps. At the same time, they are fully recyclable in line with Nilfisk's environmental awareness policy.

SW8000 puts you in the driver's seat of the most advanced and innovative industrial class ride-on sweepers. With its extraordinary 2 meters wide sweeping path, SW8000 lets you sweep and clean large areas, such as parking lots, warehouses and factory floors.



TECHNICAL DATA	SW8000 165D CAB HEATER	SW8000 165D CAB HEATER AC	SW8000 165LPG CAB HEATER	SW8000 165LPG CAB HEATER AC	SW8000 D	SW8000 LPG
Motor power source	Diesel	Diesel	LPG	LPG	Diesel	LPG
Max. speed (km/h)	15	15	15	15	15	15
Productivity 1 side broom theoretical/actual (m²/h)	23925/16750	23925/16750	23925/16750	23925/16750	23925/16750	23925/16750
Productivity 2 side brooms theoretical/actual (m²/h)	29000/20300	29000/20300	29000/20300	29000/20300	29000/20300	29000/20300
Working width with right side broom (mm)	1650	1650	1650	1650	1650	1650
Working width with 2 side brooms (mm)	2000	2000	2000	2000	2000	2000
Sound pressure level (dB(A))	82.8	82.8	80.6	80.6	82.8	80.6
Hopper volume (l)	400	400	400	400	400	400
Max. dumping height (cm)	152	152	152	152	152	152
Max. climbing rate (%)	20	20	20	20	20	20
Length x width x height (mm)	2410x1630x1500	2410x1630x1500	2410x1630x1500	2410x1630x1500	2410x1630x1500	2410x1630x1500
Operating weight (kg)	1593	1593	1585	1585	1435	1427
<b>FEATURES</b>						
Adjustable steering and seat	•	•	•	•	•	•
Fuel gauge	•	•	•	•	•	•
Headlights	•	•	•	•	•	•
Amber safety beacon	•	•	•	•	•	•
Ergonomic driver seat	•	•	•	•	•	•
Parking brake	•	•	•	•	•	•
Variable high dump system	•	•	•	•	•	•
<b>STANDARD EQUIPMENT</b>						
FLTR PANEL ULTRA-WEB CELLULOSE	8-24-04139-1	8-24-04139-1	8-24-04139-1	8-24-04139-1	8-24-04139-1	8-24-04139-1
SIDE BROOM POLY 41 DEGREES	56508498	56508498	56508498	56508498	56508498	56508498
ARM REST RH ONLY	7-03-04250	7-03-04250	7-03-04250	7-03-04250	7-03-04250	7-03-04250
BACK UP ALARM KIT	56507023	56507023	56507023	56507023	56507023	56507023
FOAM FILLED TIRE KIT	56507037	56507037	56507037	56507037	56507037	56507037
SWITCH KIT-OPERATOR PRESENCE	56107668	56107668	56107668	56107668	56107668	56107668
TILT STEERING OPTION	56107810	56107810	56107810	56107810	56107810	56107810
AMBER STROBE CAB	56508825	56508825	56508825	56508825		
AMBER STROBE NO OHG					56507038	56507038
MAIN BROOM PROEX-WIRE	56507424	56507424	56507424	56507424	56507424	56507424
<b>ITEM NO.</b>	<b>56383691</b>	<b>56383690</b>	<b>56383693</b>	<b>56383692</b>	<b>56107513</b>	<b>56107512</b>



### main broom natural

For applications with fine dust, sensitive floors and carpet sweeping



### Main broom steel+ppl

Popular for use to sweep both indoors and outdoors



### headlight

Can be fitted to the front of the sweeper to improve visibility



### Flashing beacon

Draws attention to the machine in its working environment



### side broom protection

Protect the side brooms of the machine



### On-board charger

For both Wet and Gel Batteries



### NoN marking skirts

Skirts for sweeping on highly sensitive floors



### Carpet kit

Non-marking skirts, natural fibre main and side brooms, pre-filter. To be used in carpet sweeping applications



### Brush, left side kit

Sweeps the dirt and debris into the path of the main broom. Enlarges the total sweeping path and consequently the productivity of the sweeper



### filters

Paper filter: Works well in dry, high dust conditions  
Polyester: Excellent in moist applications, can be washed, dried and re-used



### Overhead guard

For additional operator safety, especially in warehouses and Industry



### Main broom natural

Excellent material for dust control and sweeping fine debris, but has a relatively shorter wear life than other materials.



### Main broom PPL + steel

Popular for use to sweep both indoors and outdoors



### Main broom ppl

Superior pickup of sand, gravel and litter. Less aggressive on the floor compared to the PPL+STEEL



### Solid, Super elastic tires

Can not puncture, mostly used in industry with metal chips or nails



### Suspension seat

Comfortable seat with adjustable suspension based on operator's weight



### Front corner guards

Protect the front of the machine



### Litter vac

Suitable for cleaning hard to reach spots like dock plates, under steps or shelving etc.



### DustGuard™ kit

To control air borne dust on the side broom/s



### Working light front

The front and rear lights provide light on focused areas where the headlights do not reach



### Working light rear



### Overhead guard

For additional operator safety, especially in warehouses and industry



### Raised air intake

Elevates engine air intake level. Used in very dusty applications









## Silent cleaning and stripping of hard floor – you get the job done quickly and efficiently

- Price competitive: Nilfisk quality and performance for less money
- High performance: Powerful scrubbing and stripping in a smart construction
- Common design: Recognized Nilfisk design signals cost savings and easy handling
- Common accessories: No complexity and easy to operate
- Improved features: Cable hook for the operator, big wheels, easy cable storage, ergonomic handle and improved safety
- A complete range of optional accessories to suit specific tasks
- Also run at 230V/60hz

FM400 L machines have a 43 cm brush/pad diameter and it is designed for medium-duty usage, comfortable and fatigue free operation, effective results. Scrubbing and spray cleaning and stripping of hard floors are handled efficiently and quickly.



TECHNICAL DATA	FM400 L
Rated power (W)	1100
Sound pressure level at 1.5 m (dB(A) ISO 3744)	59
Brush/pad speed (RPM)	180
Brush torque (nm)	63
Brush/pad diameter (mm)	430
Cable length (m)	15
Height with handle vertical (mm)	1236
Height motorhousing (mm)	323
Handle vibration level (m/s <sup>2</sup> )	<2.5
Length x width x height (mm)	572x445x1236
Weight (kg)	37
FEATURES	
Spray cleaning	•
Carpet shampooing	•
Sanding	•
Cable holder	•
Ergonomic handle	•
Integrated plug holder	•
Easy cable change	•
ITEM NO.	56380056



## High speed polishing and spray cleaning of hard floors ensuring you excellent results

- Price competitive: Nilfisk quality and performance for less money
- High performance: Fast and efficient with a low sound level
- Common design: Recognized Nilfisk design signals cost savings and easy handling
- Common accessories: No complexity and easy to operate
- Improved features: Cable hook for the operator, big wheels, easy cable storage, ergonomic handle and improved safety
- A complete range of optional accessories to suit specific tasks

Ideal for high-speed polishing and spray cleaning of hard floors. The balance is excellent and the solid aluminium construction provides durability and extended life.



TECHNICAL DATA	FM400 H
Rated power (W)	1500
Sound pressure level at 1.5 m (dB(A) ISO 3744)	61
Brush/pad speed (RPM)	410
Brush torque (nm)	36
Brush/pad diameter (mm)	430
Cable length (m)	15
Height with handle vertical (mm)	1236
Height motorhousing (mm)	323
Handle vibration level (m/s <sup>2</sup> )	<2.5
Length x width x height (mm)	572x445x1236
Weight (kg)	40
<b>FEATURES</b>	
Cable holder	•
Click on-off brush	•
Offset brush	•
Ergonomic handle	•
High visibility cable	•
Integrated plug holder	•
Belt drive	•
<b>ITEM NO.</b>	<b>56380058</b>



## Cost-effective maintenance of virtually all floors

- Price competitive: Nilfisk quality and performance for less money
- High performance: Powerful scrubbing or polishing
- Common design: Recognized Nilfisk design signals cost savings and easy handling
- Common accessories: No complexity and easy to operate
- Improved features: Cable hook for the operator, big wheels, easy cable storage, ergonomic handle and improved safety
- A complete range of optional accessories to suit specific tasks

FM400 D offers the choice of either 185 or 370 rpm for easy, efficient and cost-effective maintenance of virtually all floors. Built for standard and medium-duty use, this unit handles scrubbing as well as high-speed spray cleaning or polishing.



TECHNICAL DATA	FM400 D
Rated power (W)	1100/1500
Sound pressure level at 1.5 m (dB(A) ISO 3744)	61
Brush/pad speed (RPM)	185/370
Brush torque (nm)	58/40
Brush/pad diameter (mm)	430
Cable length (m)	15
Height with handle vertical (mm)	1236
Height motorhousing (mm)	323
Handle vibration level (m/s <sup>2</sup> )	<2.5
Length x width x height (mm)	572x445x1236
Weight (kg)	40
FEATURES	
Carpet shampooing	•
Dual power	•
Offset brush	•
Ergonomic handle	•
High visibility cable	•
Integrated plug holder	•
Belt drive	•
ITEM NO.	56380061





## Ease of use and reliability at competitive price

- Price competitive: extremely competitive on prices against major competitors
- Ultra high speed to make perfect shining floors
- Common design: Nilfisk image to the Customer is improved, cost savings and complexity reduction
- Improved features: cable hook, plug holder, big wheels, safety, easy cable replacement, ergonomic handle

BU500 burnisher is a 1500rpm belt driven machine. Improved ergonomics in use and transportation, thus adding special features as ergonomic handle, trip fuse, built-in padholder, 15m cable, robust construction.



TECHNICAL DATA	BU500
Protection class / IP protection	IPX0
Rated power (W)	1100
Sound pressure level at 1.5 m (dB(A) ISO 3744)	<70
Brush/pad diameter (mm)	510
Brush/pad pressure (g/cm <sup>2</sup> )	10
Brush/pad speed (RPM)	1500
Brush torque (nm)	12
Cable length (m)	15
Height motorhousing (mm)	na
Height with handle vertical (mm)	1261
Length x width x height (mm)	824x566x1261
Weight (kg)	41
<b>FEATURES</b>	
Cable holder	•
Ergonomic handle	•
Folding handle	•
High visibility cable	•
Easy cable change	•
Belt drive	•
Burnishing	•
<b>ITEM NO.</b>	<b>56380063</b>



## For medium/large hard floors, nothing compares to this outstanding burnisher

- Simple controls and low profile design make operating the unit easier and safer
- Self-regulating pad pressure eliminates the need for adjustments and reduces operator errors
- The burnishing deck automatically lifts when the motor is turned off for better floor protection
- On board battery charger saves downtime and adds convenience
- Excellent active dust control with HEPA filtration optional for dust sensitive areas

BU800 represents the most technically advanced means of restoring and maintaining a high gloss shine on floors. The many features include easier-than-ever operation, added safety considerations, passive and (optional) active dust control.



TECHNICAL DATA	BU800
Protection class / IP protection	IPX4
Rated power (W)	1500
Sound pressure level at 1.5 m (dB(A) ISO 3744)	68
Brush/pad diameter (mm)	508
Brush/pad pressure (g/cm <sup>2</sup> )	Automatic
Brush/pad speed (RPM)	1500
Length x width x height (mm)	1270x580x1050
Weight (kg)	79
<b>FEATURES</b>	
Dust collection	•
Non marking traction wheels	•
Pressure regulation	•
Floating deck	•
Ergonomic handle	•
<b>STANDARD EQUIPMENT</b>	
CHARGER BATTERY 36V 21A	41036A
<b>ITEM NO.</b>	<b>56383526</b>

# Overview of accessories



**Pad holders**  
Low speed  
High speed  
Flexi



**5 brushes satellite system**  
Available with different bristles diameter and material (for 510 B/B3 only)



**Natural fiber**  
For uneven and sensitive floors



**Hard floor brush**  
For medium/heavy scrubbing



**Heavy duty brush**  
For deep cleaning, difficult removal and stripping



**Hard pads**  
Black: stripping  
Brown: stripping  
Blue: stripping/scrubbing



**Soft pads**  
Orange Green: polishing high speed. Beige: polishing low speed. White: spray cleaning/ polishing



**Medium pads**  
Green: scrubbing  
Red: soft scrubbing/ spray cleaning.



**Foam generator**  
For carpet dry foam method



**Dust skirt**  
To be applied together with vac unit (dry applications)



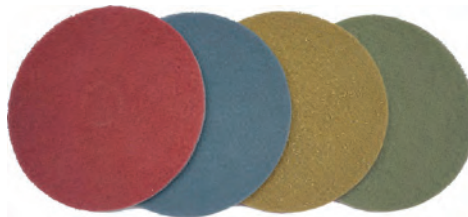
**Spray bottle kit**  
For spray cleaning applications



**Solution tank**  
For scrubbing applications



**Vacuum kit**  
To be used in all applications where dust should be collected and/or controlled



**ECO brilliance pads**







## Cleaning carpet spaces in a big way with the ES300

- Front mounted nozzle makes dumping faster and easier for the operator
- The removable, increased capacity recovery tank along with the stowable handle make dumping and refilling much simpler
- Ergonomic adjustable handle for easy operation – adjusts to the height of the operator
- A floating brush head adjusting automatically for better carpet contact and improved water recovery
- A larger tank with increased water capacity provides extended cleaning time and fewer refills
- Powerful vacuum motor for efficient removal of dirt and faster dry times
- Adjustable handle design for easy maneuverability in tight spaces
- Compact design makes storage and maintenance more convenient
- Quickly switch between cleaning modes
- Large wheels for easy maneuverability for up/down stairs

With the ES300 Nilfisk has entered a new era of carpet cleaning. This machine is ideal for cleaning your high and light traffic carpeted areas and not only remove dirt and water, but the machine also meets the highest standards to extend the life of your carpets. Besides its great productivity and cleaning performance ES300 is easy to operate.



TECHNICAL DATA	ES300 NILFISK
Rated power (W)	1824
Working width (mm)	410
Suction width (mm)	480
Pump pressure (bar/psi)	~120
Brush speed (RPM)	1950
Brush motor (W)	249
Vacuum motor power (W)	1119
Sound pressure level at 1.5 m (dB(A) ISO 3744)	68
Solution/recovery tank (l)	34/26.5
Vacuum shoe width (cm)	48
Length x width x height (mm)	711x489x813
Gross weight (gvw) (kg)	46.3
<b>FEATURES</b>	
Adjustable handle	•
No tool brush removal	•
No tool vacuum shoe removal	•
Hard floor cleaning	•
Removable recovery lid	•
Ergonomic handle	•
Solution tank with easy drain system	•
<b>STANDARD EQUIPMENT</b>	
HAND TOOL/HOSES ASSEMBLY	56265767
BRUSH ASSEMBLY 16	56265044
<b>ITEM NO.</b>	<b>56265503</b>



Hard floor squeegee kit



Carpet accessory kit







## Simple and easy-to-use vacuum cleaner – for general everyday cleaning

- Intuitive on/off switch
- Compact cable storage
- Accessory storage
- Simple dust bag replacement

VP100 offers you simple cleaning solution. Intuitive design with simple operation ensures that VP100 can be used with very little instruction.



TECHNICAL DATA	VP100
Rated power (W)	880
Suction power end of tube (W)	192
Airflow (l/sec.)	30
Dust bag capacity (l)	8.5
Length x width x height (mm)	340x320x340
Cable length (m)	8
Weight (kg)	5.2
<b>FEATURES</b>	
Storage of accessories	•
Cable storage	•
<b>STANDARD EQUIPMENT</b>	
HOSE CPL D32	147 0765 500
BRUSH NOZZLE D32	140 8244 500
CREVICE NOZZLE D32 L153 BLACK	147 0146 500
COMBI NOZZLE RD277 KIT	107411677
DSU8 AND DSU10 MAIN FILTER ASSEMBLY KIT	VA81235
EAGLE2 MOTR FRONT FILTER PLATE KIT	VA85064
EXTENSION TUBE STEEL D32	140 8246 040
<b>ITEM NO.</b>	<b>50000470</b>





## The reliable everyday vacuum cleaner – in an ergonomic and light-weight design

- Best-in-class filling capacity which means less time spent changing dust bags
- Weighs from just 5 kg making it easy to move from place to place
- Low sound pressure level from 58 dB(A) makes the machine suitable for daytime cleaning
- High filtration level with HEPA exhaust filter
- Secure and easy to reach accessory and power cord storage
- Dual speed on selected variants for tailored use in a wider variety of applications
- Detachable orange cord on selected variants
- VP300 can be carried safely and comfortably in one hand

The Nilfisk VP300 series is a basic, well-built and durable machine that can be relied upon to do the job day in and day out. It is ideal for cleaning offices, hotel rooms, retail outlets and similar light to medium duty applications.

The Nilfisk VP300 series has a top rated filtration level with a H13 HEPA exhaust filter as standard on all variants. This helps maintain a high quality of air within the cleaning environment.



TECHNICAL DATA	VP300 ECO HEPA EU	VP300 HEPA BASIC EU	VP300 HEPA EU1	VP300 HEPA EU2
Rated power (W)	400	800	800/400	800/400
Suction power end of tube (W)	110	215	215/110	215/110
Airflow (l/sec.)	25	32	32/25	32/25
Dust bag capacity (l)	10	10	10	10
Length x width x height (mm)	395x340x390	395x340x390	395x340x390	395x340x390
Cable length (m)	10	10	15	10
Weight (kg)	5	5.5	5.5	5.5
<b>FEATURES</b>				
Detachable cord			•	•
Dust bag 1 pcs.	•	•	•	•
With fixed cable	•	•		
Hepa filtration	•	•	•	•
Two speed			•	•
H13 Exhaust filter	•	•	•	•
<b>STANDARD EQUIPMENT</b>				
HOSE CPL D32	147 0765 500	147 0765 500	147 0765 500	147 0765 500
EXTENSION TUBE ALUMINIUM				011 6431 500
TELESCOPIC TUBE ACC.	107403804			
TELESCOPIC TUBE ALUMINIUM			011 8130 500	
CREVICE NOZZLE	107408039	107408039	107408039	107408039
BRUSH NOZZLE D32		140 8244 500	140 8244 500	140 8244 500
CREVICE NOZZLE D32 L153 BLACK			147 0146 500	147 0146 500
COMBI NOZZLE RD295P W.CLIP		107417790		107417790
NA38 COMBI NOZZLE WO CLICK KIT	107418965			
NOZZLE MULTI SURFACE 32 MM			140 6700 540	
SACK FILTER	147 1432 500	147 1432 500	147 1432 500	147 1432 500
HEPA FILTER H13	147 1250 600	147 1250 600	147 1250 600	147 1250 600
DETACH CORD SET 10M ORANGE EU				107402676
DETACH CORD SET 15M ORANGE EU			107402901	
EXTENSION TUBE STEEL D32		140 8246 040		
<b>ITEM NO.</b>	<b>107415311</b>	<b>107415322</b>	<b>41600870</b>	<b>41600871</b>



### A famous and well-known workhorse – efficient and durable for large area cleaning

- Excellent sound level
- Outstanding durability with sturdy steel container
- High quality components
- High filling capacity, 15 litre dust bag
- HEPA H13 exhaust filtration as standard
- Nozzle parking
- Dual speed function on selected variants

Nilfisk VP930 is the reliable partner for demanding cleaning applications in hotels, schools, offices and hospitals. Rugged and stable with a large dust bag capacity of 15 litres.

The ingenious design optimises air flow patterns and reduces energy losses to an absolute minimum, offering one of the quietest professional vacuum cleaners in the world.



TECHNICAL DATA	VP930 ECO HEPA EU A++	VP930 HEPA Basic EU	VP930 HEPA EU S2
Rated power (W)	400	760	760/400
Suction power end of tube (W)	120	240	240
Airflow (l/sec.)	26	33	33/26
Dust bag capacity (l)	15	15	15
Length x width x height (mm)	440x390x330	440x390x330	440x390x330
Cable length (m)	15	15	15
Weight (kg)	7.9	7.9	7.9
<b>FEATURES</b>			
Dust bag, 5 pcs.			•
Inside painted container	•	•	•
Hepa filtration	•	•	•
Two speed			•
<b>STANDARD EQUIPMENT</b>			
HOSE ALU.HANDLE D32 1.9 m	140 2782 500	140 2782 500	140 2782 500
EXTENSION TUBE ALUMINIUM		011 6431 500	011 6431 500
TELESCOPIC TUBE ALUMINIUM	011 8130 500		
COMBI NOZZLE RD295P W.CLIP		107417790	107417790
NA38 COMBI NOZZLE WO CLICK KIT	107418965		
CREVICE NOZZLE	010 3098 500		010 3098 500
SMALL COMBI NOZZLE	011 3104 500	011 3104 500	011 3104 500
FILTER MAIN FOAM GD930	140 1515 500	140 1515 500	140 1515 500
MOTOR FILTER	140 1535 510	140 1535 510	140 1535 510
HEPA FILTER H13	147 1250 600	147 1250 600	147 1250 600
DUST BAG 5-PCS			140 7015 020
<b>ITEM NO.</b>	<b>107415450</b>	<b>107415451</b>	<b>107415453</b>





## Efficient and environmentally friendly cleaning – with innovative and flexible features

- 330/550W or 730/330 fan unit with energy rating ranging from A++ to A
- Dual speed function for optimized power consumption and cleaning performance
- HEPA exhaust filter as standard
- New magnetic closing of dust compartment securing high reliability and ease of use
- Available with standard cord, detachable cord or cord rewind
- Best in class sound quality

Nilfisk VP600 is the efficient and advanced choice ensuring cost-effective cleaning of applications such as hotels, contract cleaning, restaurants, offices and institutions.

VP600 offers a wide range of features to choose from and you can find exactly the variant that fits your specific cleaning job. Choose the cord solution that suits you and helps you reduce cleaning time and improve the cleaning process. Great user benefits and clever design offers you what you'd expect from a Nilfisk vacuum cleaner.



TECHNICAL DATA	VP600 ECO HEPA	VP600 HEPA BASIC EU	VP600 HEPA STD 2 EU	VP600 HEPA STD 3 EU
Sound power level dB(A) IEC/EN 60335-2-69	70/74	62	74/70	74/70
Rated power (W)	330/550	730	730/330	730/330
Suction power end of tube (W)	75/155	200	200/75	200/75
Airflow (l/sec.)	24/28	30	30/24	30/24
Dust bag capacity (l)	10	10	10	10
Length x width x height (mm)	480x300x270	480x300x270	480x300x270	480x300x270
Cable length (m)	15	10	15	10
Weight (kg)	7	7	7	7
<b>FEATURES</b>				
Detachable cord	•		•	
Dust bag 1 pcs.	•	•	•	•
Dual power	•		•	•
Hepa filtration	•	•	•	•
Cable rewind				•
Ergonomic handle	•	•	•	•
<b>STANDARD EQUIPMENT</b>				
HOSE CPL D32	147 0765 500	147 0765 500	147 0765 500	147 0765 500
EXTENSION TUBE ALUMINIUM		011 6431 500		
TELESCOPIC TUBE ALUMINIUM	011 8130 500		011 8130 500	011 8130 500
CREVICE NOZZLE	107408039	107408039	107408039	107408039
BRUSH NOZZLE D32	140 8244 500	140 8244 500	140 8244 500	140 8244 500
NE10 NOZZLE			107413075	107413075
NA38 COMBI NOZZLE WO CLICK KIT	107418965			
NOZZLE MULTI SURFACE 32 MM		140 6700 540		
HEPA FILTER H13	147 1250 600	147 1250 600	147 1250 600	147 1250 600
SACKFILTER BASIC	107413056	107413056	107413056	107413056
DETACH CORD SET 15M ORANGE EU	107402901		107402901	
POWER MODULE DETACH EU	107413044		107413044	
POWER MODUL FIXED EU		107413043		
POWER MODUL REWINDER EU				107413048
<b>ITEM NO.</b>	<b>107418540</b>	<b>107418541</b>	<b>41600860</b>	<b>41600861</b>



## Cordless vacuum cleaning at its powerful best

- High productivity with up to 60 minutes runtime on a fully charged battery
- Fast battery charging in just 40 minutes offers continuous cleaning with the use of two batteries
- Excellent cleaning performance with power boost function for heavy duty cleaning
- Battery driven cleaning offers greater freedom and mobility to clean just about anywhere with no need for electricity and trailing or rewind of cables
- Safe cleaning environment with no risk of guest or operator tripping over a cord
- Optimized battery capacity: Intelligent Nilfisk technology monitors the 36V Lithium batteries during both operation and charging
- Best in class sound pressure level from just 56 db(A) enabling cost-effective daytime cleaning
- HEPA H13 exhaust filter as standard ensuring a clean environment for the user and the surroundings

The Nilfisk VP600 Battery vacuum cleaner is a flexible dual-speed machine boosting your productivity – thanks to its cordless mobility and runtime of up to 60 minutes. With a charge time of only 40 minutes the machine offers you non-stop cleaning performance by switching between two 36V Lithium batteries.



TECHNICAL DATA	VP600 Battery	VP600 BATTERY EU (2 BATTERIES)	VP600 BATTERY – EXCL CHARGER
Rated power (W)	650	650	650
Suction power end of tube (W)	45/116	45/116	45/116
Airflow (l/sec.)	21.7/26.7	21.7/26.7	21.7/26.7
Dust bag capacity (l)	10	10	10
Length x width x height (mm)	480x300x270	480x300x270	480x300x270
Weight (kg)	7.2	7.2	7.2
Battery charge time (min.)	≤ 40	≤ 40	n/a
Battery run time (min.)	60/30	60/30	60/30
Filter type	H13	H13	H13
<b>FEATURES</b>			
Dust bag 1 pcs.	•	•	•
Battery version	•	•	•
HEPA H13 main filter	•	•	•
<b>STANDARD EQUIPMENT</b>			
HOSE CPL D32	147 0765 500	147 0765 500	147 0765 500
TELESCOPIC TUBE ALUMINIUM	011 8130 500	011 8130 500	011 8130 500
CREVICE NOZZLE	107408039	107408039	107408039
BRUSH NOZZLE D32	140 8244 500	140 8244 500	140 8244 500
COMBI NOZZLE RD295P W.CLIP	107417790	107417790	107417790
NOZZLE MULTI SURFACE 32 MM	140 6700 540	140 6700 540	140 6700 540
HEPA FILTER H13	147 1250 600	147 1250 600	147 1250 600
SACKFILTER BASIC	107413056	107413056	107413056
BATTERY FAST CHARGER LI 500W – EU	41600864	41600864	
BATTERY LI 36V 10S4P + VP600B BATT COVER	41600869	41600869	41600869
<b>ITEM NO.</b>	<b>41600821</b>	<b>41600901</b>	<b>41600900</b>



## Efficient cleaning with convenience

- Low sound level for operator comfort and cleaning in noise-sensitive areas
- Lightweight vacuum cleaner and a harness that is ergonomically designed to reduce fatigue
- Good filtration with HEPA exhaust filter
- Durable construction for longer working life
- Containers in different sizes to fit the application
- 15 metre detachable cable with safety release saves time
- Easy to store as it stands on the floor or can be wall hung
- Suitable for left or right handed use
- Exhaust air designed so that it does not interfere with the operator

The Nilfisk GD 5/GD 10 backpack vacuums surpass all criteria, with technical advancement that shows in every Nilfisk product, making fast productive cleaning at a price that won't bust your budget. There are many things that should be present in a good backpack vacuum cleaner. It should be light in weight, with even weight distribution, and the noise level must be as low as possible. Without these basics, a backpack vacuum cleaner is uncomfortable and impractical to operate.



TECHNICAL DATA	GD10 BACK HEPA EU	GD5 BACK HEPA BASIC EU	GD5 BACK HEPA EU
Rated power (W)	780	780	780
Suction power end of tube (W)	225	225	225
Airflow (l/sec.)	33	33	33
Dust bag capacity (l)	10	5	5
Length x width x height (mm)	380x260x570	380x260x570	380x260x570
Cable length (m)	15	15	15
Weight (kg)	5	4.5	4.5
<b>FEATURES</b>			
Outlet for electro nozzle			•
<b>STANDARD EQUIPMENT</b>			
HOSE CONICAL COMPLETE	147 1236 500	147 1236 500	147 1236 500
EXTENSION TUBE ALUMINIUM		011 6431 500	
TELESCOPIC TUBE ALUMINIUM	011 8130 500		011 8130 500
BRUSH NOZZLE D32	140 8244 500		140 8244 500
CREVICE NOZZLE BLACK	22302100		22302100
COMBI NOZZLE RD295P W.CLIP	107417790	107417790	107417790
SACK FILTER 10L	147 1099 500		
SACK FILTER 5 L		147 1100 500	147 1100 500
HEPA FILTER H13	147 1250 600	147 1250 600	147 1250 600
HARNESS PREMIUM CPL	147 1246 510		147 1246 510
HARNESS STD.CPL		147 1090 510	
DUST BAG KIT 5L 5-PCS			147 1098 500
<b>ITEM NO.</b>	<b>107417927</b>	<b>107417934</b>	<b>107417935</b>



## Backpack vacuum that requires no electrical connections

- Maximum freedom and mobility thanks to the cordless and ergonomic backpack design
- High productivity with up to 60 minutes of runtime on a fully charged 36V Lithium battery
- Best in class charge time of only 40 minutes offers continuous cleaning with the use of two batteries
- Safer cleaning environment for guests, visitors and the operator with no cord to trip over
- Optimal performance with boost function adds suction power for heavy duty cleaning
- Low sound pressure level enabling cost-effective daytime cleaning
- Optional HEPA filter available for optimized air quality

The Nilfisk GD 5 Battery vacuum cleaner offers all you need to get the job done faster – leaving the need for cords and power outlets behind you.

The backpack design will let you work with ease! Being compact and mobile, the Nilfisk GD 5 Battery will deal effectively with dust in facilities with limited space between seats, tables, and shelves. The machine is an ideal choice for cafes, restaurants, shops, cinemas, auditoriums and conference rooms, as well as transportation.



TECHNICAL DATA	GD5 Battery
Rated power (W)	650
Suction power end of tube (W)	45/116
Airflow (l/sec.)	21.7/26.7
Dust bag capacity (l)	5
Length x width x height (mm)	240x330x755
Weight (kg)	5.3
Sack filter area (cm <sup>2</sup> )	1397
Battery charge time (min.)	≤ 40
Battery run time (min.)	60/30
<b>FEATURES</b>	
Dust bag 1 pcs.	•
Battery version	•
<b>STANDARD EQUIPMENT</b>	
HOSE CONICAL COMPLETE	147 1236 500
TELESCOPIC TUBE ALUMINIUM	011 8130 500
CREVICE NOZZLE	107408039
BRUSH NOZZLE D32	140 8244 500
COMBI NOZZLE RD295P W.CLIP	107417790
NOZZLE MULTI SURFACE 32 MM	140 6700 540
PRE FILTER	147 1095 500
SACK FILTER 5 L	147 1100 500
BATTERY FAST CHARGER LI 500W – EU	41600864
BATTERY LI 36V 10S4P + BATTERY HANDLE	41600872
<b>ITEM NO.</b>	<b>41600841</b>





## Exceptional cleaning performance for medium and low cut piles

- Quick release cord clip
- Detachable power cable removal for quick service
- Tools-free brush removal
- Non-marking, tear resistant bumper
- Convenient handle for lifting
- Standard certified H13 HEPA filter

VU500 delivers exceptional cleaning performance in an easy to use, easy to maintain upright vacuum that is designed to withstand stringent environmental requirements.

Automatic, self-adjusting brush height ensures proper cleaning performance and maximum productivity especially when cleaning on the medium and low cut piles.



TECHNICAL DATA	VU500	VU500
Sound power level dB(A) IEC/EN 60335-2-69	80	80
Rated power (W)	810	810
Suction power end of tube (W)	130	130
Airflow (l/sec.)	27	27
Dust bag capacity (l)	3.5	3.5
Length x width x height (mm)	330x318x1180	330x390x1180
Cable length (m)	10	10
Weight (kg)	8	8.5
<b>FEATURES</b>		
Detachable cord	•	•
Compact design	•	•
Cable storage	•	•
No tool brush removal	•	•
Ergonomic handle	•	•
Hose storage holders	•	•
<b>STANDARD EQUIPMENT</b>		
HOSE STRETCHABLE	147 0950 500	147 0950 500
CREVICE NOZZLE D35	147 1203 500	147 1203 500
HEPA FILTER H13	147 1250 600	147 1250 600
BRUSH 12INCH RED	107407697	107407697
BRUSH 15 INCH		147 0930 510
EXTENSION TUBE 35MM	147 0851 500	147 0851 500
<b>ITEM NO.</b>	<b>107418426</b>	<b>107418433</b>



The heavy-duty upright vac for easy and efficient cleaning

- 64 cm cleaning path
- 2 vacuum motors ensuring a high vacuuming performance
- 1 brush motor
- Built in hose and tube for hard to reach areas

GU700A is an optimal upright solution for daily vacuum cleaning of large carpet areas. This heavy-duty machine makes operations easy and efficient. The separate motors for the brush and vacuum, provide high performance and durability together with an in depth cleaning of even solid mud and other dirt settings.



TECHNICAL DATA	GU700A
Rated power (W)	2250
Tank capacity (l)	35
Suction power end of tube (W)	na
Airflow (l/sec.)	52
Dust bag capacity (l)	35
Length x width x height (mm)	1040x750x970
Cable length (m)	23
Weight (kg)	51
FEATURES	
Motor-driven brush	•
ITEM NO.	56330910



## Compact and handy wet & dry vacuum cleaner

- Push & Clean filter cleaning technology
- Washable PET fleece filter
- Certified HEPA filter available as an accessory
- MultiFit accessory system with telescopic tube
- Convenient accessory and cable storage
- Exhaust air blow function
- Stainless steel container option

The Nilfisk VL200 is a compact and easy-to-use wet and dry vacuum cleaner with Push & Clean filter cleaning system and convenient accessory storage. A mobile machine available also with a stainless steel container for the extra tough environments.



TECHNICAL DATA	VL200	VL200 inox
Rated power (W)	1200	1200
Tank capacity (l)	20	30
Suction power end of tube (W)	250	250
Airflow (l/sec.)	48	48
Dust bag capacity (l)	14	14
Length x width x height (mm)	380x390x510	390x400x640
Weight (kg)	7.5	10.5
<b>FEATURES</b>		
Stainless steel container		•
Washable PET fleece filter	•	•
Push&Clean filter cleaning	•	•
Storage of accessories	•	•
Cable storage	•	•
Hose holder	•	•
Fleece filter bag 1 pcs.	•	•
<b>STANDARD EQUIPMENT</b>		
HOSE D32 1.9M CPL	107407308	107407308
TELESCOPIC TUBE 1130MM D32	81906500	81906500
FLOOR NOZZLE D32 RUBBER STRIP	107407310	107407310
FLOOR NOZZLE D32 BRUSH	107407311	107407311
BRUSH NOZZLE D32	107407312	107407312
CREVICE NOZZLE D32	107407334	107407334
FILTERELEMENT ATTIX	302000490	302000490
TELESCOPIC TUBE HOLDER KIT D32	107409978	107409978
<b>ITEM NO.</b>	<b>107406660</b>	<b>107406661</b>





## Basic and simple wet & dry vacuum cleaner

- Stainless steel tubes
- Drain hose
- Foam & Dry filters
- Stainless steel containers

The VL100 is the perfect choice when what you need is fast efficient cleaning with no frills attached. Strong, robust and reliable – all your basic wet & dry cleaning needs covered in this straight forward product line.



TECHNICAL DATA	VL100-35 EU GO	VL100-55 EU GO	VL100-75 EU GO
Rated power (W)	1000	2000	2000
Suction power end of tube (W)	210	380	380
Airflow (l/sec.)	31	52	52
Dust bag capacity (l)	18.2	28.1	44.4
Cable length (m)	8	8	8
Weight (kg)	10	20	20.5
<b>FEATURES</b>			
Tube holder		•	•
Dual filter system		•	•
Storage of accessories		•	•
Cable storage	•	•	•
Drain hose		•	•
<b>STANDARD EQUIPMENT</b>			
HOSE D32 1.9M CPL	107407308		
HOSE D40 2.5M CPL		107407336	107407336
WET FLOOR NOZZLE Ø32 RUBBER STRIP	VA82025		
WET FLOOR NOZZLE Ø40 RUBBER STRIP		VA81845	VA81845
FLOOR NOZZLE D32 BRUSH	107407311		
FLOOR NOZZLE D40 BRUSH		107407339	107407339
BRUSH NOZZLE D32	107407312		
CREVICE NOZZLE D32	107407334		
CREVICE NOZZLE D40		107408850	107408850
55L ABSORBING DUST FILTER		VA80119	VA80119
CLOTH FILTER ASSEMBLY	VA81990		
EXTENSION TUBE D32 – SS	107407309		
EXTENSION TUBE D40 – SS		107407337	107407337
<b>ITEM NO.</b>	<b>50000340</b>	<b>50000350</b>	<b>50000360</b>



## The future of wet and dry vacuum cleaning

- The dual filtration system allows the machine to clean both wet and dry applications without the need to change filter
- Multi fit hose connector, stainless steel tube, accessory storage and nozzle parking
- Easy changing of filters with a hinged motor head to protect the machine and speed up the process

The VL500 series of wet and dry vacuum cleaners is offering performance and reliability that ensure low total cost of ownership and at the same time, has features making daily cleaning tasks easier, faster and safer.



TECHNICAL DATA	VL500 35 BSF	VL500 35 EDF
Rated power (W)	1350	1350
Tank capacity (l)	35	35
Suction power end of tube (W)	250	250
Airflow (l/sec.)	48	48
Dust bag capacity (l)	18	18
Length x width x height (mm)	460x420x730	460x420x730
Weight (kg)	11.5	12.5
Cartridge filter area (cm <sup>2</sup> )	-	2070
Sack filter area (cm <sup>2</sup> )	1051	-
Wet filter area (cm <sup>2</sup> )	-	1051
<b>FEATURES</b>		
Tube holder	•	•
Dual filter system		•
Storage of accessories	•	•
<b>STANDARD EQUIPMENT</b>		
HOSE D32 1.9M CPL	107407308	107407308
HARDFLOOR NOZZLE 300MM x Ø32MM – KIT	107416575	107416575
FLOOR NOZZLE D32 BRUSH	107407311	107407311
BRUSH NOZZLE D32	107407312	107407312
CREVICE NOZZLE D32	107407334	107407334
CARTRIDGE FILTER		107407297
SACK FILTER	107407296	
WET FILTER		107407299
EXTENSION TUBE D32 – SS	107407309	107407309
<b>ITEM NO.</b>	<b>107405155</b>	<b>107405160</b>



## The future of wet and dry vacuum cleaning

- Empty the container without having to remove the motor head makes operation fast and easy without risk of damage to critical components
- By transferring the weight as you lift the container, the Nilfisk Ergo Tipping system enables you to empty a completely filled container of fluid without excessive effort
- Easy changing of filters with the hinged motor head protects the machines and speeds up the process
- With the dual filtration system, the VL500 can be used in both wet or dry applications without the need to change filters

The VL500 series of wet and dry vacuum cleaners is offering performance and reliability that ensure low total cost of ownership and at the same time has features making daily cleaning tasks easier, faster and safer.



TECHNICAL DATA	VL500 55-1 BDF	VL500 55-1 BSF	VL500 55-1 EDF	VL500 55-2 BDF	VL500 55-2 BSF	VL500 55-2 EDF
Rated power (W)	1350	1350	1350	2500	2500	2500
Tank capacity (l)	55	55	55	55	55	55
Suction power end of tube (W)	200	200	200	200	200	200
Airflow (l/sec.)	48	48	48	72	72	72
Dust bag capacity (l)	28	28	28	28	28	28
Length x width x height (mm)	840x620x1000	840x620x1000	660x620x890	840x620x1000	840x620x1000	660x620x890
Weight (kg)	24.5	23.5	26.5	25.5	24.5	27.5
Cartridge filter area (cm <sup>2</sup> )	4410	-	4410	4410	-	4410
Sack filter area (cm <sup>2</sup> )	-	1840	-	-	1840	-
Wet filter area (cm <sup>2</sup> )	1840	-	1840	1840	-	1840
FEATURES						
Dual power				•	•	•
Dual filter system	•		•	•		•
Folding transport handle			•			•
Adjustable handle			•			•
Storage of accessories	•	•	•	•	•	•
Drain hose	•	•	•	•	•	•
Ergo tipping			•			•
STANDARD EQUIPMENT						
HOSE D40 2.5M CPL	107407336	107407336	107407336	107407336	107407336	107407336
HARDFLOOR NOZZLE 400MM x Ø40MM – KIT	107416577	107416577	107416577	107416577	107416577	107416577
FLOOR NOZZLE D40 BRUSH	107407339	107407339	107407339	107407339	107407339	107407339
CREVICE NOZZLE D40	107408850	107408850	107408850	107408850	107408850	107408850
CARTRIDGE FILTER	107407300		107407300	107407300		107407300
SACK FILTER		107407304			107407304	
WET FILTER	107407302		107407302	107407302		107407302
TUBEHOLDER D40	107407335	107407335	107407335	107407335	107407335	107407335
EXTENSION TUBE D40 – SS	107407337	107407337	107407337	107407337	107407337	107407337
ITEM NO.	107407459	107405156	107405161	107407460	107405157	107405162





## The future of wet and dry vacuum cleaning

- Quick release adjustable push handle for easy and ergonomic maneuvering of the machine
- Emptying the container without having to remove the motor head makes operation fast and easy without risk of damage to critical components
- By transferring the weight as you lift the container, the Nilfisk Ergo Tipping system enables you to empty a completely filled container of fluid without excessive effort
- Easy changing of filters with the hinged motor head protects the machines and speeds up the process
- The VL500 can be used in both wet or dry applications without the need to change filters

The VL500 series of wet and dry vacuum cleaners is offering performance and reliability that ensure low total cost of ownership and at the same time has features making daily cleaning tasks easier, faster and safer.



TECHNICAL DATA	VL500 75-1 BSF	VL500 75-1 EDF	VL500 75-2 BDF	VL500 75-2 BSF	VL500 75-2 EDF
Rated power (W)	1350	1350	2500	2500	2500
Tank capacity (l)	75	75	75	75	75
Suction power end of tube (W)	200	200	200	200	200
Airflow (l/sec.)	48	48	72	72	72
Dust bag capacity (l)	44	44	44	44	44
Length x width x height (mm)	840x620x1000	660x620x1030	840x620x1000	840x620x1000	660x620x1030
Cable length (m)	10	10	10	10	10
Weight (kg)	26	27.5	28	27	28.5
Sack filter area (cm <sup>2</sup> )	1840	-	-	1840	-
Wet filter area (cm <sup>2</sup> )	-	1840	1840	-	1840
<b>FEATURES</b>					
Dual power			•	•	•
Dual filter system		•	•		•
Folding transport handle		•			•
Adjustable handle		•			•
Storage of accessories	•	•	•	•	•
Drain hose	•	•	•	•	•
Ergo tipping		•			•
<b>STANDARD EQUIPMENT</b>					
HOSE D40 2.5M CPL	107407336	107407336	107407336	107407336	107407336
HARDFLOOR NOZZLE 400MM x Ø40MM – KIT	107416577	107416577	107416577	107416577	107416577
FLOOR NOZZLE D40 BRUSH	107407339	107407339	107407339	107407339	107407339
CREVICE NOZZLE D40	107408850	107408850	107408850	107408850	107408850
CARTRIDGE FILTER		107407300			107407300
SACK FILTER	107407304			107407304	
WET FILTER		107407302			107407302
TUBEHOLDER D40	107407335	107407335	107407335	107407335	107407335
EXTENSION TUBE D40 – SS	107407337	107407337	107407337	107407337	107407337
<b>ITEM NO.</b>	<b>107405158</b>	<b>107405163</b>	<b>107407462</b>	<b>107405159</b>	<b>107405164</b>



## Nozzles

Upholstery nozzle, round brush, crevice nozzle



## Floor nozzles

Combination and multi surface nozzles



## Electro nozzle

For use on carpets



## Dust bag

Synthetic



## Dust bag

Paper bags



## Wet and dry filter

For VL500 series



## Sack filter



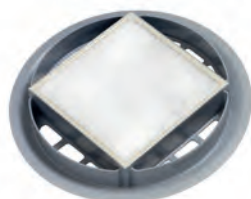
## Tubes

Chrome, steel, aluminium.  
Telescopic or basic



## Cover HEPA

For VL500 series



## HEPA filter

For VP930



## Hose

For VP930







# Single Phase Industrial Vacuums



**118**

## A real industrial vacuum in 95 cm height

1 kW power, model 118 is suitable for the recovery of dry materials. Built in stainless steel to be used in industrial environments, it is however very small and light for great ergonomics and ease of use. Equipped with HEPA filter for hazardous waste.



**VHS120**

## The most compact and powerful ever

2 Kw power, model VHS120 is suitable for the recovery of wet and dry materials. It is very compact, but it is equipped with a 37 liters container and it ensures excellent performances. Available even in M and H class for the recovery of toxic material. In these versions it is equipped with Longopac® system.



TECHNICAL DATA	Unit	118	VHS120	VHS120 MC
Voltage	V	230	230	230
Frequency	Hz	50-60	50	50
Protection class	IP	43	44	44
Insulation class	Class	F	I	I
Rated power	kW	1	2	2
Airflow without hose	L/min	2700	5500 – 330	5500 – 330
Vacuum max	kPa	21.5	21 – 210	21 – 210
Sound pressure level	dB(A)	75	74	74
Container capacity	L	25	37	-
Longopac capacity	L	-	-	25
Main filter type			L Class Polyester	M Class Polyester with glued seams
Main filter area	cm <sup>2</sup>	8000	16000	16000
Upstream hepa filter H14 area	cm <sup>2</sup>	-	-	-
Inlet	mm	50	50	50
Length x Width x Height	cm	50x55x94	56x57x101.5	63x62.8x130
Weight	kg	26	38	51

# All-In-One Industrial Vacuums



## Simplicity is the main concept behind the all-in-one range

We are talking about the simplicity of receiving the right combination for your application.

You can now choose between 6 different models built according to the main needs of 6 different segments and equipped with the best accessory kit which enhances the efficiency of your vacuum cleaner making it become the perfect solution for you.

Your task? Just plug and play... and continue doing your job without any thought. equipped with the immersion separator container, which is the ideal solution when combustible dust has to be recovered.



TECHNICAL DATA	Unit	VHS120 #GENERAL CLEANING	VHS120 FN #BAKERY	VHS120 HC #B&C	VHS120 CC GV #METAL - CHIPS	VHO200 #METAL - LIQUIDS	VHO200 #WINERY
Voltage	V	230	230	230	230	230	230
Frequency	Hz	50	50	50	50	50	50
Protection class	IP	44	44	44	44	44	44
Insulation class	Class	I	I	I	I	I	I
Rated power	kW	2	2	2	2	2,4	2,4
Airflow without hose	L/min	5200	5200	5200	5200	4500	4500
Airflow without hose	m3/h	312	312	312	312	270	270
Vacuum max	kPa	21	21	21	21	23	23
Vacuum max	mbar	210	210	210	210	230	230
Sound pressure level	dB(A)	74	74	74	74	70	70
Container capacity	L	37	37	-	37	-	-
Longopac capacity	L	-	-	25	-	-	-
Max liquid capacity	L	-	-	-	-	75	75
Shaving capacity	L	-	-	-	-	22	22
Main filter type		L Class Polyester	L Class Polyester	M Class Polyester With Glued Seams	L Class Polyester	-	-
Main filter area	cm <sup>2</sup>	16000	16000	16000	16000	-	-
Upstream hepa filter h14 area	cm <sup>2</sup>	-	-	16000	-	-	-
Inlet	mm	50	50	50	50	50	50
Length x Width x Height	mm	560x570x1015	560x570x1015	630x628x1300	560x570x1015	580x880x1230	580x880x1230
Weight	kg	38	38	53	38	60	60

# Single Phase Industrial Vacuums



## S2B-S3B

### Power, simplified

2 or 3 kW power, respectively with two or three independent motors, S2B and S3B industrial vacuums can collect wet and dry materials. In particular they are designed to be used in metal manufacturing production sites to extract metal chips, metal filings, oil and lubricant solutions.



## S2-S3

### The first digital and fully modular industrial vacuums

2 or 3 kW power with "by-pass" motor, models S2 and S3 can collect wet and dry materials. They are equipped with a practical electronic dashboard for an easy use and a constant monitoring of the vacuum efficiency. Available with 40, 50 or 100 L bin or with Gravity Unload System (GU) with plastic or Longopac® disposal Bag.



TECHNICAL DATA	Unit	S2B	S3B	S2	S3
Voltage	V	230	230	230	230
Frequency	Hz	50-60	50-60	50-60	50-60
Protection class	IP	43	43	44	44
Insulation class	Class	I	I	I	I
Rated power	kW	2	3	2	3
Airflow without hose	L/min	5500	8100	5500	8100
Vacuum max	kPa	21	21	21.1	21.1
Sound pressure level	dB(A)	74	75	70	71
Container capacity	L	50	50-100	40	50-100
Main filter area	cm <sup>2</sup>	19500	19500	19500	19500
Inlet	mm	70	70	70	70
Length x Width x Height	cm	79.5x60x127.5	79.5x60x127.5-157	80x60x123	80x60x130-158
Weight	kg	64	67-70	62	68-71



# Single Phase Industrial Vacuums



## VHS110 ATEX / ClassII Div2



### When a singlephase is ATEX certified

1.1 kW, suitable for the recovery of dry materials. VHS110 ATEX is suitable for Atex Z22 locations. Thanks to the brushless motor, this machine ensures high performance, it needs less maintenance and is suitable for continuous use. The innovative PullClean system effectively cleans the antistatic star filter while the vacuum is running. The optional HEPA14/ULPA15 upstream filter is the perfect choice when collecting fine dusts.



TECHNICAL DATA	Unit	VHS110 ATEX	VHS110 CIID2
Voltage	V	230	120
Frequency	Hz	50	60
Protection class	IP	64	64
Insulation class	Class	F	F
Rated power	kW	1.1	1
Airflow without hose	L/min	3600	2900
Vacuum max	kPa	22	22
Sound pressure level	dB(A)	76	76
Container capacity	L	37	37
Main filter area	cm <sup>2</sup>	10000	10000
Inlet	mm	50	50
Length x Width x Height	cm	56x57x124	56x57x124
Weight	kg	42	44

# Threephase Industrial Vacuums



## T30S

### When power is essential

3 kW power, suitable for the recovery of wet and dry materials, it is the right choice for production companies looking for a vacuum with a good price/quality ratio. Available in three different versions: with 50 or 100 liters container and with gravity unload system through polyethylene LDPE bag or Longopac®, the “endless” bag for dust collection.

### CTS 22 – CTS 40 – CTT 40



### Compact, versatile and fully configurable

2.2 and 4 kW power, the CTS-CTT series is suitable for the recovery of dry materials.

CTS models are equipped with lateral channel blower for a great vacuum and reduced airflow while CTT models mount a turbine, releasing a great airflow and less vacuum. The small size assures ease of movement, manoeuvrability, and allows to reach any place.



TECHNICAL DATA	Unit	T30S	CTS22	CTS40	CTT40
Voltage	V	400	400	400	400
Frequency	Hz	50	50	50	50
Protection class	IP	55	55	55	55
Insulation class	Class	F	F	F	F
Rated power	kW	3	2.2	4	4
Airflow without hose	L/min	5830	5300	7000	8900
Vacuum max	kPa	31	30	23	18
Sound pressure level	dB(A)	70	62	65	71
Container capacity	L	50-100	50	50	50
Main filter area	cm <sup>2</sup>	19500	19500	19500	19500
Inlet	mm	70	70	70	70
Length x Width x Height	cm	60x98x125-153	105x60x125	105x60x125	105x60x125
Weight	kg	100-103	100	114	119

# Threephase Industrial Vacuums



## T22 – T40 – T40W – T75

### Tailored for metal production

From 2.2 up to 7.5 kW, suitable for wet and dry materials. Different models for different needs, in particular the 4 kW model is available with double stage side-channel blower connected in series for a greater vacuum (model T40) or connected in parallel for an highest airflow (T40W). Ideal for the cleaning and maintenance of the plants.

## T22<sup>PLUS</sup> – T40<sup>PLUS</sup> – T40W<sup>PLUS</sup> – T40<sup>PLUS</sup> HE



### Health and safety as standard

From 2.2 to 4.3 kW power, for dry materials. This series has been designed to assure safety to production companies, even in explosion risk areas (they are ATEX certified), moreover L-M-H class versions are suitable for the collection of toxic dust. The side channel blower in series on models T22<sup>PLUS</sup> and T40<sup>PLUS</sup> allows to reach a high vacuum, while the side channel blower in parallel on model T40W<sup>PLUS</sup> assures a greater airflow. Model T40<sup>PLUS</sup> HE performs efficiently with less energy consumption thanks to the induction motor producing a vacuum of 330 mbar and an airflow of 270 m³/h: no power limit but a reduced electricity demand from the first use. All T<sup>PLUS</sup> models can be customized.



TECHNICAL DATA	Unit	T22	T40	T40W	T75	T22 <sup>PLUS</sup>	T40 <sup>PLUS</sup>	T40W <sup>PLUS</sup>
Voltage	V	400	400	400	400	400	400	400
Frequency	Hz	50	50	50	50	50	50	50
Protection class	IP	55	55	55	55	55	55	55
Insulation class	Class	I	I	I	F	F	F	F
Rated power	kW	2.2	4.3	4	7.5	2.2	4.3	4
Airflow without hose	L/min	5250	5250	8150	8900	5250	5250	8150
Vacuum max	kPa	30	46	30	35	21	36	19
Sound pressure level	dB(A)	68	72	72	74	67	71	71
Container capacity	L	50-100	50-100	50-100	100	50-100	50-100	50-100
Main filter area	cm²	19500	19500	19500	35000	19500	19500	35000
Inlet	mm	70	70	70	70	70	70	70
Length x Width x Height	cm	113x60x124-153	113x60x124-153	113x60x124-153	130x60x164	129x60x126-154	129x60x126-154	129x60x136-164
Weight	kg	111-114	132-135	136-139	188	138	162	167



# Threephase Industrial Vacuums



## 3707-3907 series



### Endless power for endless possibilities

From 5.5 up to 13 kW, these industrial vacuums are suitable for the recovery of wet & dry materials. They are strong, powerful and reliable, therefore they are ideal for continuous and heavy-duty uses. The wide filter area and the great capacity of the container avoid machinery downtimes. Different models for different needs: greater vacuum pressure, greater air flow or greater power. These vacuums are the most requested by the heavy industry.

## 3997 – 3997W – 3997WC



### First class power

22 kW power, these models are suitable for the recovery of wet and dry materials. For continuous, heavy duty use, these industrial vacuums can be connected to a fixed central system thanks to their high power. The electric filter shaker is mounted as standard.



TECHNICAL DATA	Unit	3707	3707/10	3907	3907W	3907/18	3997	3997C	3997W	3997WC
Voltage	V	230/400	230/400	230/400	230/400	230/400	400	400	400	400
Frequency	Hz	50	50	50	50	50	50	50	50	50
Protection class	IP	55	55	55	55	55	55	55	55	55
Insulation class	Class	F	F	F	F	F	F	F	F	F
Rated power	kW	5.5	7.5	11	11	13	20	20	20	20
Airflow without hose	L/min	8100	13500	8400	15300	18600	18600	18600	36000	36000
Vacuum max	kPa	35.3	24.5	43.1	29.4	29.4	44	44	25	25
Sound pressure level	dB(A)	78	78	78	78	78	79	79	78	78
Container capacity	L	175	175	175	175	175	175	175	175	175
Main filter area	cm <sup>2</sup>	35000	35000	35000	35000	35000/66000	66000	110000	98000	110000
Inlet	mm	100	100	100	100	100	100	100	120	120
Length x Width x Height	cm	160x80x181	160x80x181	160x80x181	160x80x181	160x80x181	200x90x215	200x90x215	200x90x215	200x90x215
Weight	kg	291	305	411	324	360	650	697	650	697

\* Electric filtershaker as standard

# Compressed Air Industrial Vacuums



## VHC110 – VHC120 – VHC200



### Compressed air, amplifying saving

Designed to operate whenever electricity is unavailable or forbidden, these models are ideal to recover both solid debris and liquid spills.

Models VHC110 and VHC120 are equipped with a new technology of multistage vacuum generator system, to ensure the minimum air consumption together with good performance. Model VHC200, the largest model in the range, is the right solution for applications where top vacuum and airflow are required in heavy duty applications. The range is available in ATEX and EXP version.



TECHNICAL DATA	Unit	VHC110	VHC120	VHC200
Air consumption (at 6 bar of pressure)	NI/min	630	1260	2650
Required pressure	bar	4/7	4/7	6 max
Sound pressure level 1.5 m (ISO 3744)	dB(A)	71	72	70
Airflow without hose (at 6 bar of pressure)	l/sec	33	56	93
Vacuum max (at 6 bar of pressure)	kpa	32.5	32.5	38
Container capacity	l	37	37	50/100
Main filter type		"L" class Polyester Star filter	"L" class Polyester Star filter	Polyester Star filter
Main filter area	cm <sup>2</sup>	16000	16000	19500
Upstream hepa filter h14	cm <sup>2</sup>	16000	16000	35000
Inlet	mm	50	50	70
Length x width x height	mm	570x560x1010	570x560x1010	910x600x1300/1590
Weight	kg	37	37	67/70

# Industrial Vacuums for Oil and Chips



## VHO 200

### Collecting liquids has never been so easy!

2.4 kW power, this singlephase industrial vacuum has been designed to collect up to 75 litres of any kind of liquid, also mixed with solid materials, and discharge them very fast by simply activating the valve to change the suction into a blowing flow. It is equipped with a chip basket that can separate solid materials from liquids.

## ECO-OIL 13 – ECO-OIL 22

### Vacuum oil to save oil

1.3 kW singlephase and 2.2 kW threephase respectively, models ECO-OIL 13 and ECO-OIL 22 are specifically designed to recover oil, viscose liquids and chips, separate the solids from the liquids by means of "macrofiltration" and allowing the operator to recycle the recovered oil.



TECHNICAL DATA	Unit	VHO200	ECO-OIL 13	ECO-OIL 22
Voltage	V	230	230	400
Frequency	Hz	50	50	50
Protection class	IP	44	43	55
Insulation class	Class	I	B	F
Rated power	kW	2.4	1.3	2.2
Airflow without hose	L/min	4500	2675	5100
Vacuum max	kPa	23	31.3	32.3
Sound pressure level	dB(A)	70	70	71
Shaving capacity	L	22	30	30
Liquid capacity	L	75	180	180
Inlet	mm	50	50	50
Length x Width x Height	cm	58x88x123	67x105x150	67x105x150
Weight	kg	60	120	135

All models are equipped with anti-oil wheels with brakes.  
All seals are in rubber anti-oil.



# Industrial Vacuums for Additive Manufacturing



The industrial vacuum cleaner is an important tool in the additive manufacturing, mainly during the changeover working cycles and at the end of the process. Nilfisk has designed a specific range of products and solutions for this segment, certified by third notified bodies, in compliance with the strictest European and American regulations (BG109 and NFPA484 rev. 2018).

The range includes singlephase, threephase and compressed air vacuum cleaners, equipped with the immersion separator container, which is the ideal solution when combustible dust has to be recovered.



TECHNICAL DATA	Unit	VHS110 Z22 EXA IS	T22PLUS L100 LC Z22 EXA IS	T40WPLUS L100 Z22 EXA IS	VHC110 Z1 EXA IS	VHC120 Z1 EXA IS	VHC200 L100 Z1 EXA IS
Voltage	V	230	400	400	-	-	-
Frequency	Hz	50	50	50	-	-	-
Protection class	IP	64	65	65	-	-	-
Insulation class	Class	F	F	F	-	-	-
Rated power	kW	1.1	2.2	4	-	-	-
Air consumption	NI/min	-	-	-	630	1260	2650
(at 6 bar of pressure)							
Required pressure	bar	-	-	-	4/7	4/7	6 Max
Airflow without hose	L/min	3600	5250	8150	1980	3360	5580
Vacuum max	kPa	22	21	19	32.5	32.5	38
Sound pressure level	dB(A)	73	67	71	71	72	70
Max. dust quantity*	L	4*	6*	6*	4*	4*	6*
Main filter type		Antistatic M-class star filter	Antistatic M-class star filter	Antistatic M-class star filter	Antistatic M-Class star filter	Antistatic M-Class star filter	Antistatic M-Class star filter
Main filter area	cm <sup>2</sup>	10.000	19.500	35.000	10.000	10.000	19.500
Inlet	mm	50	70	70	50	50	70
Length x width x height	mm	560x570x1240	1290x600x1540	1290x600x1640	270x560x1240	570x560x1240	910x600x1590
Weight	kg	42	138	167	37	37	70

\* The maximum collection capacity derives from the presence of the inertization system. Local Standard requirements may impose even stricter limits, in terms of max collectable powder quantity.

# Industrial Vacuums for Food, Pharma and OEM



## IVT1000

### The vacuum for cleanrooms

Small vacuum unit, ideal for clean rooms, where maximum sterilization and full contamination control are standard requirements. It is quiet and can be completely sterilized, the right solution for recovering small quantities of toxic (or even potentially lethal) powder (HEPA/ULPA filtration).

## VHS110 CR

### Cleanroom-friendly, wet & dry

Wet&Dry single phase vacuum cleaner for cleanrooms. The GMP design and the stainless steel execution make it extremely easy to clean and sanitize.

The ULPA15 downstream filter avoids contamination of the cleanroom area, as well the optional upstream HEPA14 or ULPA15 filter secure the highest filtration efficiency in case of very fine dust.



TECHNICAL DATA	Unit	IVT1000	IVT1000 H-CLASS	IVT1000 SAFE PACK	VHS110 CR
Voltage	V	220-240	220-240	220-240	230
Frequency	Hz	50-60	50-60	50-60	50
Protection class	IP	40	40	40	54
Insulation class	Class	-	-	-	I
Rated power	kW	1.2	1.2	1.2	1
Airflow without hose	L/min	2283	2100	2100	2967
Vacuum max	kPa	19.8	20	20	20.5
Sound pressure level	dB(A)	61	61	61	76
Container capacity	L	12.5	12.5	-	37
Dust bag capacity	L	6.5	8	6.5	-
Main filter area	cm <sup>2</sup>	2100	2573	2573	10000
Inlet	mm	32	32	32	50
Length x Width x Height	cm	30x30x62.5	30x30x72.5	30x30x70	56x57x124
Weight	kg	9	11.5	9	39

# Industrial Vacuums for Food, Pharma and OEM



## VHW200 – VHW201 – VHW210 – VHW211



### The most compact vacuum cleaners for automated applications

From 0.45 up to 0.85 kW power, these three-phase fixed industrial vacuums are the smallest of Nilfisk range and are ideal to be integrated in process machines for the extracting and recovering of small quantities of dust or trimmings. Designed in compliance with GMP requirements, they are quiet and provide excellent filtration thanks to the main filter bag and the HEPA H14 upstream absolute filter as standard.

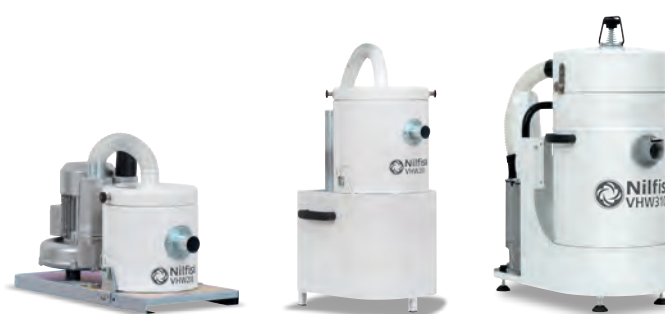


## VHW310 – VHW311



### Best onboard vacuum technology

1.5 kW power. Ideal to be integrated into process machine where only a limited space is available and high performances are required. Model VHW311 can be easily upgraded on the field with absolute filter and wheels, so as to become a mobile industrial vacuum.



TECHNICAL DATA	Unit	VHW200	VHW201	VHW210	VHW211	VHW310	VHW311
Voltage	V	400	400	400	400	400	400
Frequency	Hz	50	50	50	50	50	50
Protection class	IP	55	55	55	55	55	55
Insulation class	Class	I	I	I	I	I	I
Rated power	kW	0.45	0.45	0.85	0.85	1.5	1.5
Airflow without hose	L/min	1192	1192	1933	1933	3500	3500
Vacuum max	kPa	14.8	14.8	21	21	24	24
Sound pressure level	dB(A)	56	56	62	59	61	60
Container capacity	L	1	6.5	6.5	6.5	15	15
Main filter area	cm <sup>2</sup>	1330	1840	1840	1840	4200	4200
Inlet	mm	40	40	40	40	50	50
Length x Width x Height	cm	53x27x41.5	42x43x82	64x33x47.5	42x43x82	42x71x90.5	42x71x90.5
Weight	kg	17	25	23	31	49	61



# Industrial Vacuums for Food, Pharma and OEM



## VHW320 – VHW321

### Multifunctional innovation

1.5 kW power. Ideal to be used both as equipment of process machines and/or for cleaning and maintenance activities, they mount the new PullClean system to clean effectively the cartridge filter while the vacuum is running. VHW321, thanks to its innovative and smooth design, is extremely easy to clean and sanitize (GMP conformity). The H-class certified vac allows the safe replacement of the absolute filter without getting in contact with hazardous material.



## VHW420 – VHW421

### When hygiene meets performances

2.2 kW power. Model VHW420 has been designed to ensure the highest performances in fully automated applications operating 24/7. Model VHW421 is the perfect symbiosis between performances and hygienic design for GMP requirements, it is easy to clean and sanitize but powerful.



TECHNICAL DATA	Unit	VHW320	VHW321	VHW420	VHW421
Voltage	V	400	400	400	400
Frequency	Hz	50	50	50	50
Protection class	IP	55	55	55	55
Insulation class	Class	F	F	F	F
Rated power	kW	1.5	1.5	2.2	2.2
Airflow without hose	L/min	3200	3200	5100	5100
Vacuum max	kPa	18.5	18.5	19	19
Sound pressure level	dB(A)	60	61	63	65
Container capacity	L	25	25	46	46
Main filter area	cm <sup>2</sup>	10000	10000	20000	20000
Inlet	mm	50	50	70	70
Length x Width x Height	cm	44x78x117	44x73.5x117	54x97x139	54x97x139
Weight	kg	73	83	100	113

# Industrial Vacuums for Food, Pharma and OEM



## VHW440



### The highest performances for total hygiene productions

4 kW power, it provides excellent performances in terms of vacuum, airflow and filtration for the total cleaning of production areas.



TECHNICAL DATA	Unit	VHW440
Voltage	V	400
Frequency	Hz	50
Protection class	IP	55
Insulation class	Class	F
Rated power	kW	4
Airflow without hose	L/min	7000
Vacuum max	kPa	23
Sound pressure level	dB(A)	67
Container capacity	L	46
Main filter area	cm <sup>2</sup>	20000
Inlet	mm	70
Length x Width x Height	cm	54x97x139
Weight	kg	113

# Industrial Vacuums for Packaging and Trims



## R series



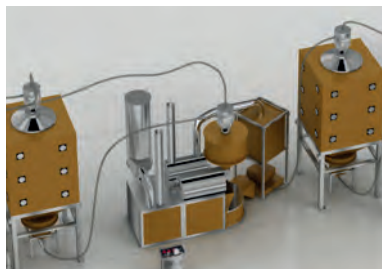
### The fastest way to collect trims

From 0.85 to 4 kW power, suitable for the recovery of trims and cuttings (paper, plastic, textile) from production lines. Suction power, construction features and dimensions are therefore tailored according to the production machines they need to serve.



TECHNICAL DATA	Unit	R104	R154	R155	R305	3507W R
Voltage	V	230/400	230/400	230/400	230/400	230/400
Frequency	Hz	50	50	50	50	50
Protection class	IP	55	55	55	55	55
Insulation class	Class	F	F	F	F	F
Rated power	kW	0.9	1.1	1.1	2.2	4
Airflow without hose	L/min	2600	3300	3300	5100	8600
Vacuum max	kPa	23	21	21	31	29
Sound pressure level	dB(A)	68	72	72	75	74
Container capacity	L	114	114	150	150	215
Main filter area	cm <sup>2</sup>	11500	11500	14350	14350	19000
Inlet	mm	50	50	50	50	70
Length x Width x Height	cm	56x120	56x120	66x125	66x125	120x70x140
Weight	kg	38	40	47	61	155

# Pneumatic Conveyors



## ELECTRIC PNEUMATIC CONVEYORS



Electric pneumatic conveyors generate vacuum through side channel blowers. Compliant with Regulation 1935/2004, they can be used in the food and pharmaceutical industry. The range includes:

- 3VT Series – conveyor for powder mixtures up to 500 kg/h and/or grains smaller than 1 mm. No demixing of the material.
- 9505 Series – blowing-based conveyor for empty capsules.
- A128X Series with single-phase brush motor – conveyor for materials up to 300 kg/h and grains larger than 1 mm.
- PCT421FG Series – conveyor, to transfer fragile products to the packaging machine.
- Modular systems: custom-made solutions for specific applications.

The “Modular system” line includes custom-made solutions for specific applications.

## COMPRESSED AIR PNEUMATIC CONVEYORS



Vacuum generation within this type of pneumatic conveyor is carried out by using compressed air systems. This system has a low noise level, high flexibility of use and it takes up less space. Thanks to the vacuum generation technology, the pump feed compressor's energy consumption is similar to that of electric systems. The standard line guarantees a very high level of hygiene. Made of AISI 304 stainless steel, it is ideal when a perfect balance between performance, compactness and low maintenance is required. This range is equipped with the “S series” pump, with a capacity up to 3100 kg/h. The premium line is employed where an optimal level of technology, efficiency and hygiene is required. All the parts in contact with the material, except for the gaskets and the filter, are made of AISI 316L stainless steel; the “H Series” pump is even more efficient, in terms of energy consumption, and it can transport up to 2600 kg/h.



TECHNICAL DATA	Unit	3VT	3VT / 25	PCC00HP	PCC12HP	PCC44SF	PCC44HF	9505	A128	A136	PCT421FG	PCT320FG
Voltage	V	400	400	-	-	-	-	220/400	220	220	400	400
Frequency	Hz	50/60	50/60	-	-	-	-	50/60	50/60	50/60	50/60	50/60
Protection class	IP	54	54	54	54	54	54	55	40	40	55	55
Insulation	Class	F	F	-	-	-	-	F	F	F	F	F
Rated power	W	0,55	0,75	Compressed air	Compressed air	Compressed air	Compressed air	0,36	1	1	2,2	1,5
Airflow max	m³/h	267	417	717	1433	4917	4617	1300	2700	2700	3960	3180
Vacuum max	kPa	74	74	75	75	75	75	-	21	21	19	18,5
Sound pressure level	dB(A)	61	61	70-73	69-77	69-77	69-77	62	74	74	65	60
Hooper capacity	L	11	11	2	3	14	14	198	8	16	7	7
Required pressure	bar	4/6	4/6	4/6	4/6	4/6	4/6	-	4/6	4/6	-	-
Air consumption	nl/sec, 6 bar	0,2	0,2	3,5	7	28	28	-	0,56	0,56	-	-
Main filter area	cm²	1200	1200	800	1400	2500	7500	11000	7500	14100	20000	19500
Inlet	mm	30	30	25	32/38	63/76	63/76	60	40	50	50	70
Hopper LxWxH	cm	27.5x27.5x54.2	27.5x27.5x54.2	35.1x38.6x28.7	44.2x48.9x67.1	46.2x44.8x106.7	48.6x55.3x103.8	-	44x30x73	55x40x87	49.1x36.5x59.3	49.1x36.5x59.3
Hopper weight	kg	-	-	12	22	34	40	-	14	18	7	7
Trolley + motor LxWxH	cm	76x46x87	76x46x87	-	-	-	-	120x61x120	-	-	90x46x145	90x50x139
Complete trolley	kg	78	78	-	-	-	-	104	-	-	55	73
Material		AISI 304/316L	AISI 304/316L	AISI 316L	AISI 316L	AISI 316L	AISI 316L	AISI 316L	AISI 304	AISI 304	AISI 304/316L	AISI 304/316L
Conveying capability up to	kg	500	500	300	600	2700	2200	700*	300	350	500	250

\*Capsules per second



# Centralized Vacuum Systems



## CENTRALIZED VACUUM SYSTEMS



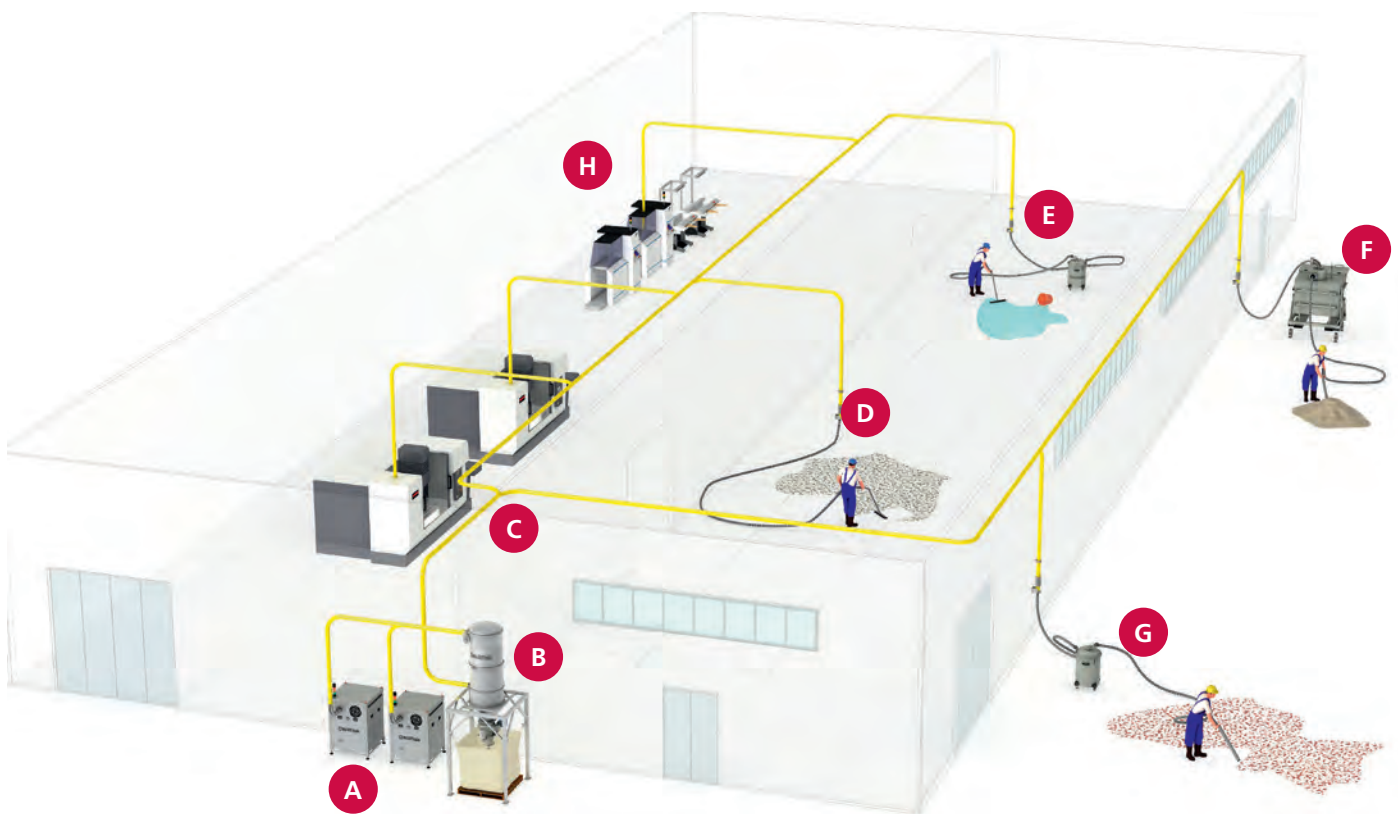
Centralized vacuum systems are the perfect tool to efficiently clean wide areas, with a lot of floor space, large amounts of waste to collect and even when interconnected to process machines to provide vacuum where needed.

Many the advantages:

- It allows to collect materials from many inlets simultaneously;
- it can work continuously, allowing an immediate saving on resources;
- vacuumed materials are collected in one single container, placed either inside or outside the factory, making it easier for the operators to provide for their disposal or recycling.

Centralized vacuum systems consist essentially of a suction unit, a control panel, a filtration system, a discharge system and a series of pipes with inlets in the requested positions.

The new range has been designed in order to be modular, silent, green. Simply smart.



**A** Suction Unit

**B** Silo/Filter Chamber

**C** Pipeline

**D** Inlet for the tools quick connections

**E** Liquid pre-separator

**F** Heavy Duty Pre-Separator

**G** Hot material pre-separator

**H** Process machines interconnection



## Lightweight and heavy-duty performance

- Low noise operation
- Washable filter in Polyester or Cotton material
- PTFE (non-stick) and Nomex (heat resistant) filter optional
- 9 liters container capacity
- Lightweight aluminium construction – built for years of heavy duty cleaning
- Unique dual filter solution available with HEPA or ULPA exhaust filters
- Bagless operation possible
- Dust class L-certification

Lightweight and portable, the Nilfisk GM 80P is the symbol of Nilfisk quality and provides durability, high performance and efficient cleaning – required by dust control professionals.

The sturdy aluminium container means that the vacuum cleaner is almost indestructible and therefore especially suitable for rough and heavy duty cleaning.

Mounted on a strong steel trolley with large rubber wheels, the machine is easy to manoeuvre. Ideal for e.g. production lines, chemi/pharma industries, hospitals and offices.



TECHNICAL DATA	GM 80P LC
Rated power (W)	1200
Inlet (mm)	38
Container capacity (l)	12.25
Main filter type	COTTON
Suction power end of tube (W)	270
Main filter area (cm <sup>2</sup> )	2100
Length x width x height (mm)	390x300x410
Weight (kg)	8
<b>FEATURES</b>	
Detachable cord	•
Robust steel chassis	•
Fleece filter bag	•
Washable filter	•
L-class hazardous dust approval	•
<b>STANDARD EQUIPMENT</b>	
HOSE 38/32MM 2M STEEL BENT END	12097500
EXTENSION TUBE D32	11112401
BRUSH ROUND GREY 100 NATU	11276901
CREVICE NOZZLE KIT	81140900
COMBI NOZZLE ROLLER PC D32	140 8492 510
FILTER COTTON GS/GM 80	61543000
MICRO-STATIC FILTER	11641000
TUBE BENT END D32 STEEL KIT	107402630
<b>ITEM NO.</b>	<b>107418493</b>



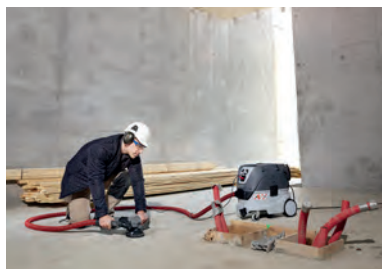
## Superior and powerful vacuum cleaner

- InfiniClean™ – Automatic filter cleaning system with minimized performance loss
- PTFE long-life filter with non-stick membrane and minimum 99,9% filtration efficiency
- Push&Clean™ – Semi-automatic filter cleaning system.
- Dust class L certification
- Unique dual filter solution available with HEPA filtration.
- Robust container with steel castors and bumper.
- MultiFit accessory system for the ultimate in task flexibility
- Flexible rubber straps, tool box storage and optional trolley handle for convenient storage and transport
- Optional motor cooling filter, exhaust air collector and Long-Life filter bag

The VHS 40 vacuum cleaner series sets a new standard for design and feature level of the Nilfisk wet & dry vacuum portfolio. With innovative filtration system, improved performance and robust design, this range represents a superior solution for professional customers looking for a safe and reliable machine. VHS 40 comes with more suction power, sealed dust system, automatic filter cleaning and several other user benefits – designed to meet the tough requirements within manufacturing and building and construction industries.



TECHNICAL DATA	VHS 40 L30 PC 220-240V 50/60HZ EU	VHS 40 L40 LC FM IC 220-240V 50/60HZ EU
Airflow rate (l/min.)	4500	4500
Vacuum (mbar/kPa)	250/25	250/25
Power Pmax (W)	1400	1400
Power Pic (W)	1200	1200
Mains connection (V~/Hz/A)	230/1/50-60/16	230/1/50-60/16
Working sound level (dB(A))	60	60
Container volume (l-max)	30	42
Main filter type	PTFE	PTFE
El cable (m)	7.5	7.5
Filter cleaning system	Push&Clean	InfiniClean
Length x width x height (mm)	565x385x520	565x385x600
Weight (kg)	14.5	16
<b>FEATURES</b>		
Softstart	•	•
Anti-static system	•	•
Push&Clean filter cleaning	•	
Hose and cable holder	•	•
InfiniClean		•
Disposal bag 1 pcs		•
Fleece filter bag 1 pcs.	•	•
<b>STANDARD EQUIPMENT</b>		
FLAT FILTER PTFE M-CLASS 1 PCS	107413540	107413540
CURVED HAND TUBE Ø36MM SS		46691
EXTENSION TUBE Ø36 2X505MM SS	107408074	107408074
TOOL ADAPTER WITH SUCTION REGULATION D32	107409977	
HOSE Ø36X4000 MM AS RED		107413544
UNIV HOSE WITH HAND TUBE D32X3500 CPL.	107409976	
FLOOR NOZZLE Ø36X300MM	302002331	
FLOOR NOZZLE D36X400MM W/D		302003666
CREVICE NOZZLE D36X200	29541	29541
<b>ITEM NO.</b>	<b>107412160</b>	<b>107412165</b>



## Powerful and safe dust extractor for hazardous dust

- InfiniClean™ – Automatic filter cleaning system with minimized performance loss
- PTFE long-life filter with non-stick membrane and minimum 99,9% filtration efficiency
- Push&Clean™ – Semi-automatic filter cleaning system on selected models.
- Dust class M and H certification including Asbestos
- Unique dual filter solution available for H-class/HEPA – including 3-stage filtration
- Flow sensor with combined acoustic and LED warning
- Robust container with steel castors and bumper.
- MultiFit accessory system for the ultimate in task flexibility
- Flexible rubber straps, tool box storage and optional trolley handle for convenient storage and transport
- Optional motor cooling filter, exhaust air collector and Long-Life filter bag

The VHS 42 M/H dust extractor series sets a new standard for design and feature level of the Nilfisk wet & dry vacuum portfolio. With innovative filtration system, improved performance, robust design and dust class M/H certification, this range represents a superior solution for professional customers looking for a reliable machine to protect workers health and safety. VHS 42 M/H comes with more suction power, sealed dust system, automatic filter cleaning and several other user benefits – designed to meet the tough requirements in building & constructions and other industries when picking up hazardous dust.



TECHNICAL DATA	VHS 42 L30 HC PC 220-240V 50/60HZ EU	VHS 42 L30 MC PC 220-240V 50/60HZ EU	VHS 42 L40 HC IC 220-240V 50/60HZ EU	VHS 42 L40 MC IC 220-240V 50/60HZ EU
Airflow rate (l/min.)	4500	4500	4500	4500
Vacuum (mbar/kPa)	250/25	250/25	250/25	250/25
Power Pmax (W)	1400	1400	1400	1400
Power Pic (W)	1200	1200	1200	1200
Mains connection (V~/Hz/A)	230/1/50-60/16	230/1/50-60/16	230/1/50-60/16	230/1/50-60/16
Working sound level (dB(A))	60	60	60	60
Container volume (l-max)	30	30	42	42
Main filter type	PTFE/Cellulose H-class	PTFE	PTFE/Cellulose H-class	PTFE
El cable (m)	7.5	7.5	7.5	7.5
Filter cleaning system	Push&Clean	Push&Clean	InfiniClean	InfiniClean
Length x width x height (mm)	565x385x520	565x385x520	565x385x605	565x385x605
Weight (kg)	14.5	14.5	16	16
<b>FEATURES</b>				
Softstart	•	•	•	•
Dual filter system	•		•	
Anti-static system	•	•	•	•
Push&Clean filter cleaning	•	•		
InfiniClean			•	•
Disposal bag 1 pcs				•
Fleece filter bag 1 pcs.		•		•
<b>STANDARD EQUIPMENT</b>				
FLAT FILTER PTFE M-CLASS 1 PCS	107413540	107413540	107413540	107413540
FILTER ELEMENT Ø140X75 H-CLASS/HEPA	107413555		107413555	
CURVED HAND TUBE Ø36MM SS	46691	46691	46691	46691
EXTENSION TUBE Ø36 2X505MM SS	107408074	107408074	107408074	107408074
TOOL ADAPTER D27 QUICKSYSTEM	302000535	302000535	302000535	302000535
HOSE Ø36X4000 MM AS RED	107413544	107413544	107413544	107413544
FLOOR NOZZLE Ø36X300MM	302002331	302002331		
FLOOR NOZZLE D36X400MM W/D			302003666	302003666
CREVICE NOZZLE D36X200	29541	29541	29541	29541
<b>ITEM NO.</b>	<b>107412162</b>	<b>107412161</b>	<b>107412167</b>	<b>107412166</b>





### A versatile, high-performance unit for demanding day-in/ day-out vacuumings

- Two motor industrial performance
- Washable PET Fleece, big surface filter for high efficiency and low maintenance costs
- Push & Clean filter cleaning system for high efficiency
- Stainless steel tiltable and removable 70 L container for easy handling and disposal
- Complete package with 38 mm accessories with stainless steel tubes and 400 mm wet&dry floor nozzle
- 10 meter cable for a large working radius
- Applicable for wet & dry pick up by reliable floating system
- Robust fleece filter bag standard

Whether it's a factory floor or warehouse loading dock, when spills happen they need to be cleaned quickly and effectively. Apart from the mess, unattended spills can create a hazard that can prove both dangerous and costly.



TECHNICAL DATA	IVB 961-0L
Rated power (W)	2x1200
Inlet (mm)	50 MultiFit
Dust class	L
Container capacity (l)	70
Main filter type	PET
Suction power end of tube (W)	270
Main filter area (cm²)	7800
Length x width x height (mm)	580x600x970
Weight (kg)	30
<b>FEATURES</b>	
Tilting container	•
Anti-static system	•
Wet & dry performance	•
Low working sound level	•
Stainless steel container	•
Push&Clean filter cleaning	•
Fleece filter bag 1 pcs.	•
<b>STANDARD EQUIPMENT</b>	
FILTER ELEMENT D275X187 PET NANO M-CLASS	107400562
UNI. SUCTION HOSE Ø38X4000MM EVA	302002796
CURVED HAND TUBE D38 MM SS	302002889
EXTENSION TUBES R38 2X500 KIT	107402474
FLOOR NOZZLE D38x400 WET AND DRY	302002798
CREVICE NOZZLE Ø38x300 MM PP	302002890
<b>ITEM NO.</b>	<b>302002914</b>



## For heavy-duty industrial cleaning and hazardous dust collection

- Two motor industrial performance
- XtremeClean fully automatic filter cleaning system for high efficiency also in H class
- Big surface filter for high efficiency and low maintenance costs
- Stainless steel sit down container for easy handling and disposal
- 10 meter cable for a large working radius
- Disposal bag standard
- Socket for automatic on/off (only -2H/M model)

The tougher the cleaning, the better the vacuum cleaner needs to be. This is why so much thought has gone into the design of the IVB 965-21 SD. With 7200 ltr. per minute of air flow, and 3000 W of maximum power, it is capable of fast, productive cleaning of dirt, metal chips and liquid spills.



TECHNICAL DATA	IVB 965-0L	IVB 965-2H/M
Rated power (W)	2x1200	2x1200
Inlet (mm)	50 MultiFit	50 MultiFit
Dust class	L	H/M
Container capacity (l)	50	50
Main filter type	PET Nano	Paper/Glass Fibre
Suction power end of tube (W)	270	270
Main filter area (cm <sup>2</sup> )	7800	7800
Length x width x height (mm)	615x690x990	615x690x990
Weight (kg)	45	45
<b>FEATURES</b>		
Anti-static system	•	•
Motor speed control	•	•
Low working sound level	•	•
Washable PET fleece filter	•	•
XtremeClean filter cleaning	•	•
Disposal bag 1 pcs	•	•
<b>STANDARD EQUIPMENT</b>		
FILTER ELEMENT D275X187 H-CLASS		107400564
FILTER ELEMENT D275X187 PET NANO M-CLASS	107400562	
DISPOSAL BAG ATTIX 7 5 PCS	302001480	302001480
SAFETY FILTER BAG H ATTIX 9. 5 PCS		302003473
<b>ITEM NO.</b>	<b>302002916</b>	<b>302002917</b>



## Approved for healthy- and explosion proof cleaning

- Safety vacuum cleaner for dustclass M ATEX Zone 22 approved
- single phase vacuum cleaner EC drive motor technology, long life / ATEX applications
- SoftStart: A gentle motor startup keeps the starting current low. For easy starting on limited electrical systems Auto On/Off. In combination with powered tools the machine starts and stops automatically when you start or stop the power tool Tilt or LiftOut container emptying.
- The 70 liter stainless steel container can be easily tilted in the frame or lifted off for emptying.

The IVB 7X M class is equipped with the unique EC drive motor system. This ensures long live time and enables use in ATEX zone 22 areas. The IVB 7X is approved according to ATEX directive 94/9/EC for the use in Zone 22.



### TECHNICAL DATA

### IVB 7-M ATEX TYPE 22

Rated power (W)	1200
Inlet (mm)	50 type 22
Dust class	M
Container capacity (l)	70
Main filter type	PET
Suction power end of tube (W)	270
Main filter area (cm <sup>2</sup> )	3000
Length x width x height (mm)	580x605x970
Weight (kg)	27.2
<b>FEATURES</b>	
Filter bag	•
Motor speed control	•
Automatic On/Off-elec. tools	•
ATEX hazardous TYPE 22 approval	•
Extra socket for tool	•
<b>STANDARD EQUIPMENT</b>	
FILTER ELEMENT Ø185X140 PET M-CLASS	302000490
HOSE Ø36X4000MM W COUPLING TYPE 22	44193
<b>ITEM NO.</b>	<b>302001895</b>



## Health&Safety Wet&Dry vacuum cleaners for ATEX Zone 22 explosive dust

- Industrial specifications, robust construction, and powerful... the definition of IVB 9
- Approved for ATEX Zone 22, M and H Class
- 2 Brushless EC (Electronic Controlled) motors
- Two motor Industrial performance
- XtremeClean fully automatic filter cleaning system for high efficiency in H and M Class
- Big surface H Class filter for high efficiency and low maintenance costs
- Stainless Steel SitDown container for perfect handling and disposal
- 10 meter cable for a large working radius
- Disposal and Safety filter bag standard

The IVB 995-0H/M SD XC TYPE 22 is the most powerful two-motor vacuum cleaner that is approved to be used for both M and H-Class dust in Zone 22 environments. Featuring XtremeClean filter cleaning and a Stainless Steel SitDown container. The perfect concept for Industrial use where safety is a must.



### TECHNICAL DATA

Rated power (W)	2x1100
Inlet (mm)	50 Type 22
Dust class	H/M
Container capacity (l)	50
Main filter type	Paper/Glass Fibre
Suction power end of tube (W)	270
Main filter area (cm²)	10000
Length x width x height (mm)	615x690x990
Weight (kg)	45

### FEATURES

Softstart	•
Anti-static system	•
Low working sound level	•
M-class hazardous dust approval	•
H-class hazardous dust approval	•
ATEX hazardous TYPE 22 approval	•
XtremeClean filter cleaning	•

### STANDARD EQUIPMENT

FILTER ELEMENT D275X187 H-CLASS	107400564
MOTOR COOLING AIR FILTER ATTIX9/IVB9	107400041

<b>ITEM NO.</b>	<b>302002919</b>
-----------------	------------------





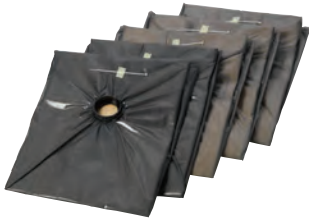
**Fixed floor nozzle**  
Type 22, Ø50x600 mm



**Pipe cleaning nozzle**



**filter bag sets, 5 pcs.**



**Safety filter bag, 5 pcs.**



**MAC/floor kit (38mm)**  
Multi fit rubber hose (38mm)



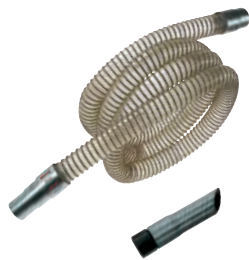
**Vacuum cleaner kit**  
For special health and safety applications



**Oven cleaning set**  
Ø38mm



**Industrial set**  
Ø50mm



**Chip set**  
Ø50mm

## Professional service makes a difference



Making the most of your cleaning has two important requirements. The ability to deploy high quality cleaning machines is a critical first step. But having easy and quick access to professional service is another key factor in running your operations smoothly, predictably, and with maximum uptime. That is why we are highly committed to delivering our Service Solutions to you.

Nilfisk Service Solutions not only provide fast and reliable back-up in the event of a breakdown. They also provide the reassurance of scheduled maintenance visits from our trained technicians. You can rest assured that your

machines will run at their optimum throughout their lifetime – and keep your business performing at its best. We understand that productivity is what matters to you.

### Nilfisk Service Solutions – how can we help you?

We realize that one size does not fit all. When signing a service contract with Nilfisk you have the opportunity to select between a range of different service solutions developed to match your specific needs. We are ready to assist you in choosing the professional service contract that best suits your operations.

### Balancing your needs and demands

We suggest that you carefully consider how important the following factors are to you before settling on a specific service programme:

- Maximised uptime
- Fast response time
- Knowing your service costs at all times
- Regular maintenance visits

Nilfisk  
Service Solutions  
**STANDARD**

### Service Solutions Standard – Professional maintenance

Your contract encompasses two yearly maintenance visits and 48 hours response time. Breakdown visits and spare parts are billed separately.

Nilfisk  
Service Solutions  
**PLUS**

### Service Solutions Plus – Optimised performance

With the Plus solution you have a firm grip on your maintenance and repair costs while knowing that your performance is never compromised, only optimised.

Nilfisk  
Service Solutions  
**PREMIUM**

### Service Solutions Premium – Maximised uptime

If uptime is your absolute top priority and key concern, Service Solutions Premium is the best choice. A quarterly maintenance visit is included, and there are no sudden financial surprises.

### Nilfisk Service Solutions – a billing model for every need

Based on our customers' feedback we present three different Nilfisk Service Solutions to you. Each solution consists of a carefully selected set of features, fit to match specific needs – and made for you and your business to benefit from.

You can choose between different billing models. Please ask our sales or service team for more detail, and do not hesitate to contact us if you have any special requirements.

CONTRACT COMPONENTS	STANDARD	PLUS	PREMIUM
Labour & travel costs	Yes	Yes	Yes
Extended warranty	Yes	Yes	Yes
Service report at all visits	Yes	Yes	Yes
Yearly maintenance visits	2	2	4
Response time	48h	48h	24h
Spare parts	X	Yes	Yes
Breakdown coverage	X	Yes	Yes
Consumables	X	X	Yes
Misuse and abuse insurance	X	X	Yes
Loan machine	X	X	Yes
Weekend coverage	X	X	Yes

The conditions and specifics of each element included in Nilfisk Service Solutions may be subject to local change.





Nilfisk A/S  
Kornmarksvej 1 · DK-2605 Brøndby · Denmark  
Tel.: +45 43 23 81 00 · Fax: +45 43 43 77 00  
mail.com@nilfisk.com  
www.nilfisk.com

  
**HydroClean**

 **Nilfisk®**